

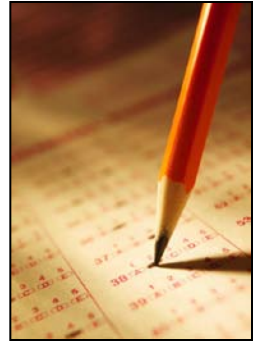
Haddonfield Public Schools

NJ ASSESSMENTS 2010

CYCLE II REPORT

GRADES 3-8 and 11

NJ Statewide Assessments



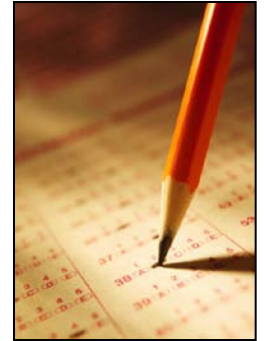
- As a result of the No Child Left Behind Act, New Jersey's statewide assessment of students changed in 2003.
- Students in grades 3, 4, 5, 6, 7 & 8 take the NJ Assessment of Skills and Knowledge (ASK) and students in grade 11 take the High School Proficiency Assessment (HSPA). Students are scored as proficient, advanced proficient or partially proficient.
- These assessments are grounded in the state's core curriculum content standards, and are designed to assess students' critical thinking skills in two fundamental areas: Language Arts Literacy (LAL) and Mathematics. Students at grade 4 and 8 are also assessed in science, but science results are not considered for NCLB reporting.
- In 2010 an end-of-course assessment was operational for Biology for high school students to replace the HSPA science assessment, and an end-of-course assessment in Algebra I was field-tested. At this time, students will still take the HSPA mathematics assessment.

NJ State Benchmarks for Adequate Yearly Progress

Incremental Increases in Expectations – Effective Nov. 2008

	Starting Pt. 2003	2005- 2007	2008- 2010	2011- 2013	2014
LAL					
Gr. 3-7	68	75	73	86	100
Gr. 8	58	66	72	86	100
Gr. 11	73	79	85	92	100
MATH					
Gr. 3-7	53	62	69	84	100
Gr. 8	39	49	61	80	100
Gr. 11	55	64	74	86	100

CONGRATULATIONS!



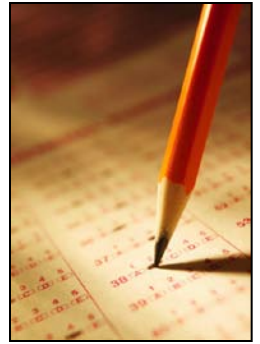
**ALL HADDONFIELD
SCHOOLS MADE AYP -
ADEQUATE YEARLY PROGRESS
**MEETING 40 of 40
INDICATORS****

More Good News!



- The Philadelphia Inquirer (Jan. 6, 2011) reported on tri-county (Burlington, Camden, and Gloucester counties) results and...
 - Haddonfield Memorial High School had the highest percentage of students passing in Language Arts in all three counties
 - Haddonfield Memorial High School had the highest percentage of students passing in Mathematics in all three counties

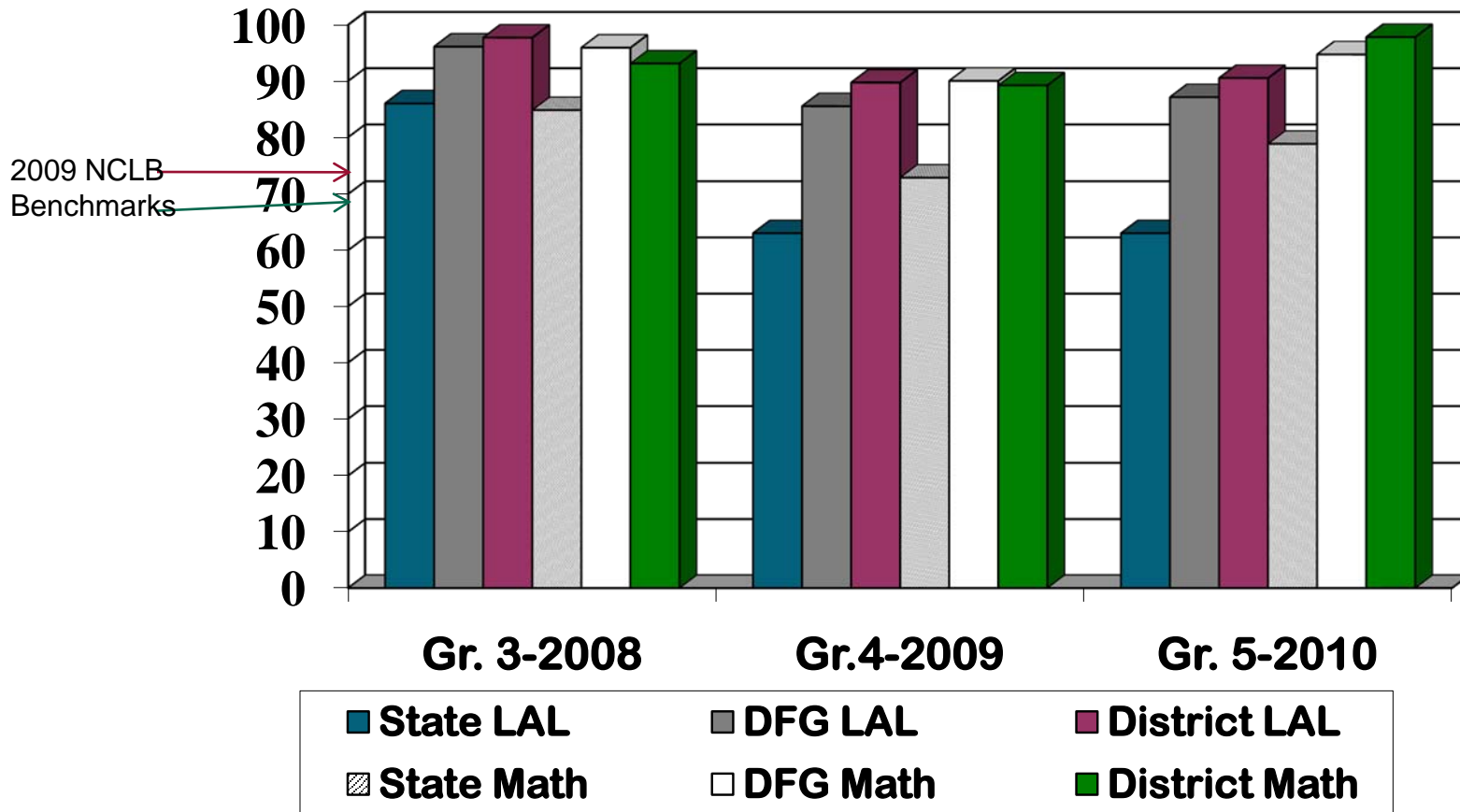
NJ ASK 2010 Comparative Results



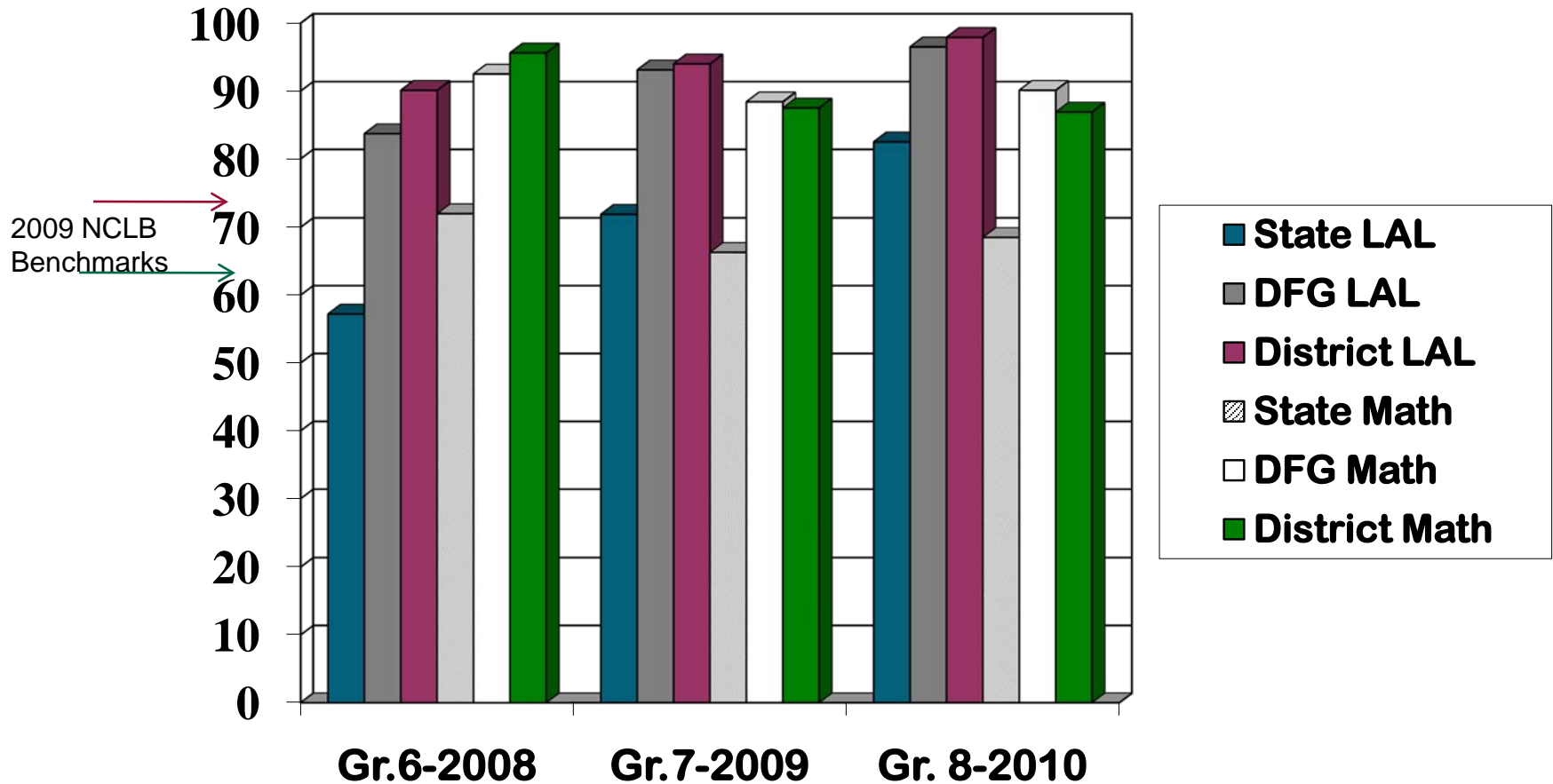
Comparing Haddonfield's success rate for the 2010 cohorts of students in grade 5 and grade 8 to statewide and DFG "J" total student performance

NJ ASK Gr. 5 Cohort Performance

2008-2010% Proficient/Advanced Proficient



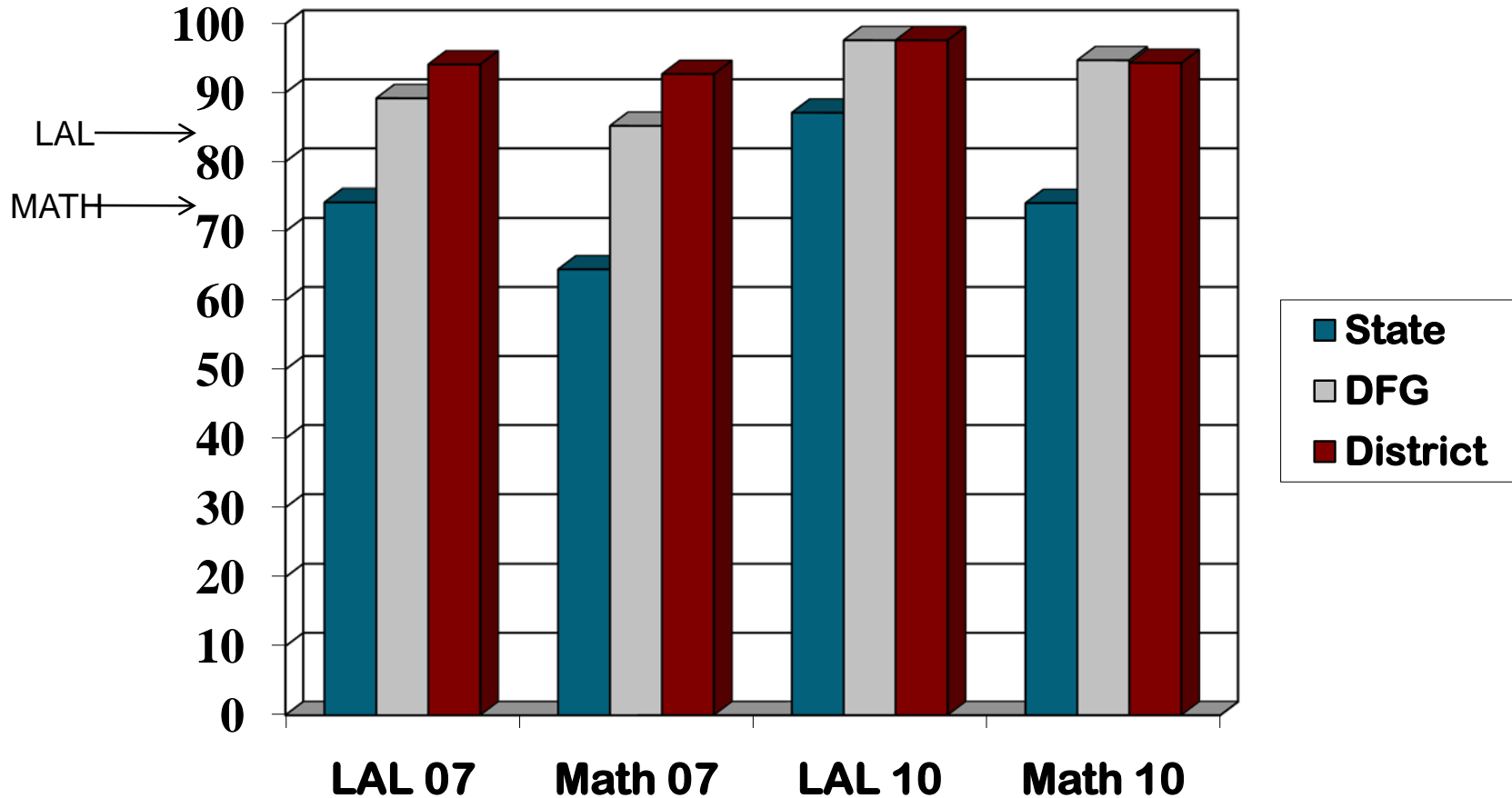
NJ ASK Gr. 8 Cohort Performance 2008-2010 % Proficient/Advanced Proficient



Grade 11 Cohort - GEPA 2007/HSPA 2010

Language Arts Literacy and Mathematics

Total Students % Proficient/Advanced Proficient



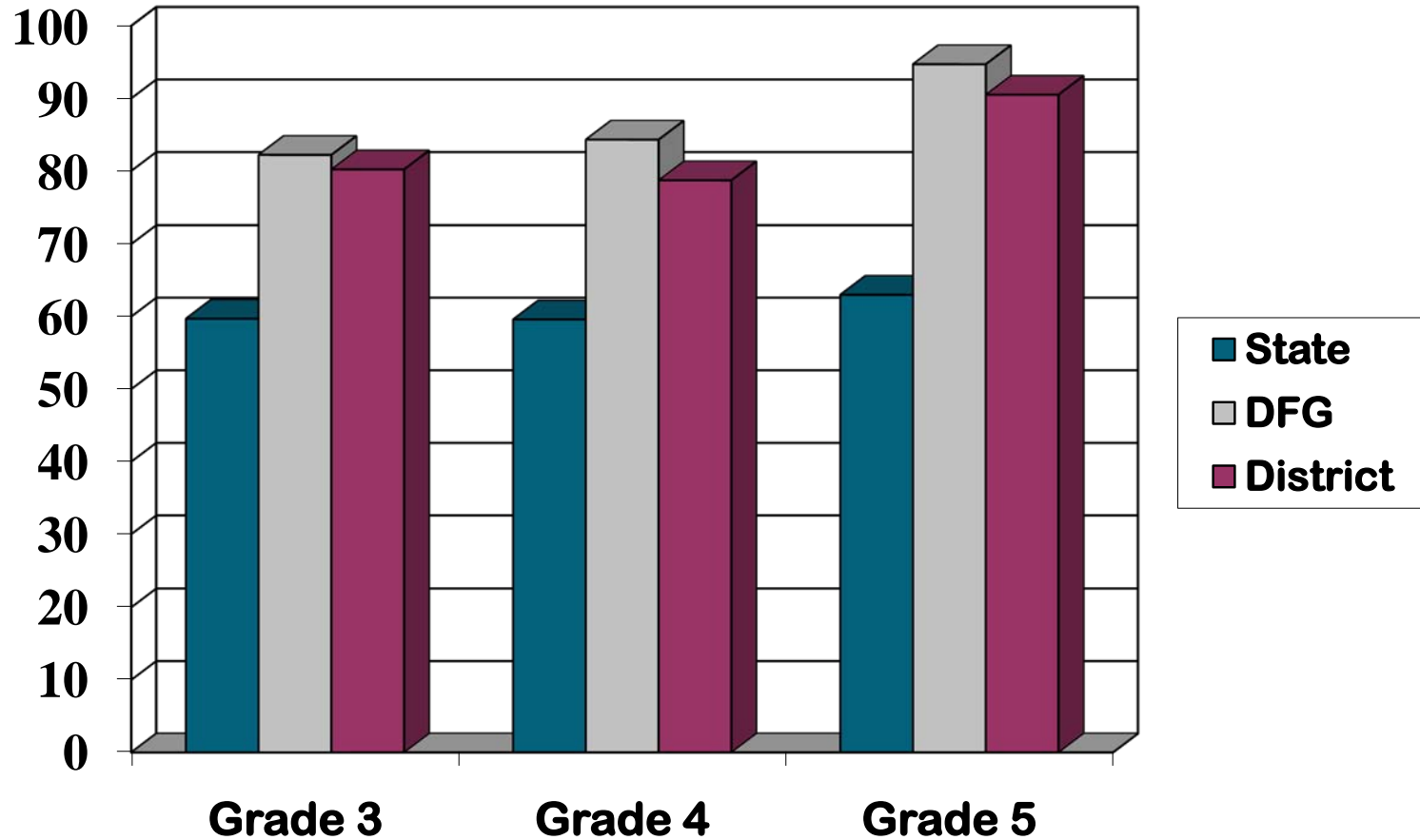
Success Rates for NJ ASK 3-8/HSPA



Results by grade levels for state, DFG “J” districts, and Haddonfield proficient and advanced proficient (pass rates) for the total population of students assessed with the NJ ASK and HSPA Spring 2010

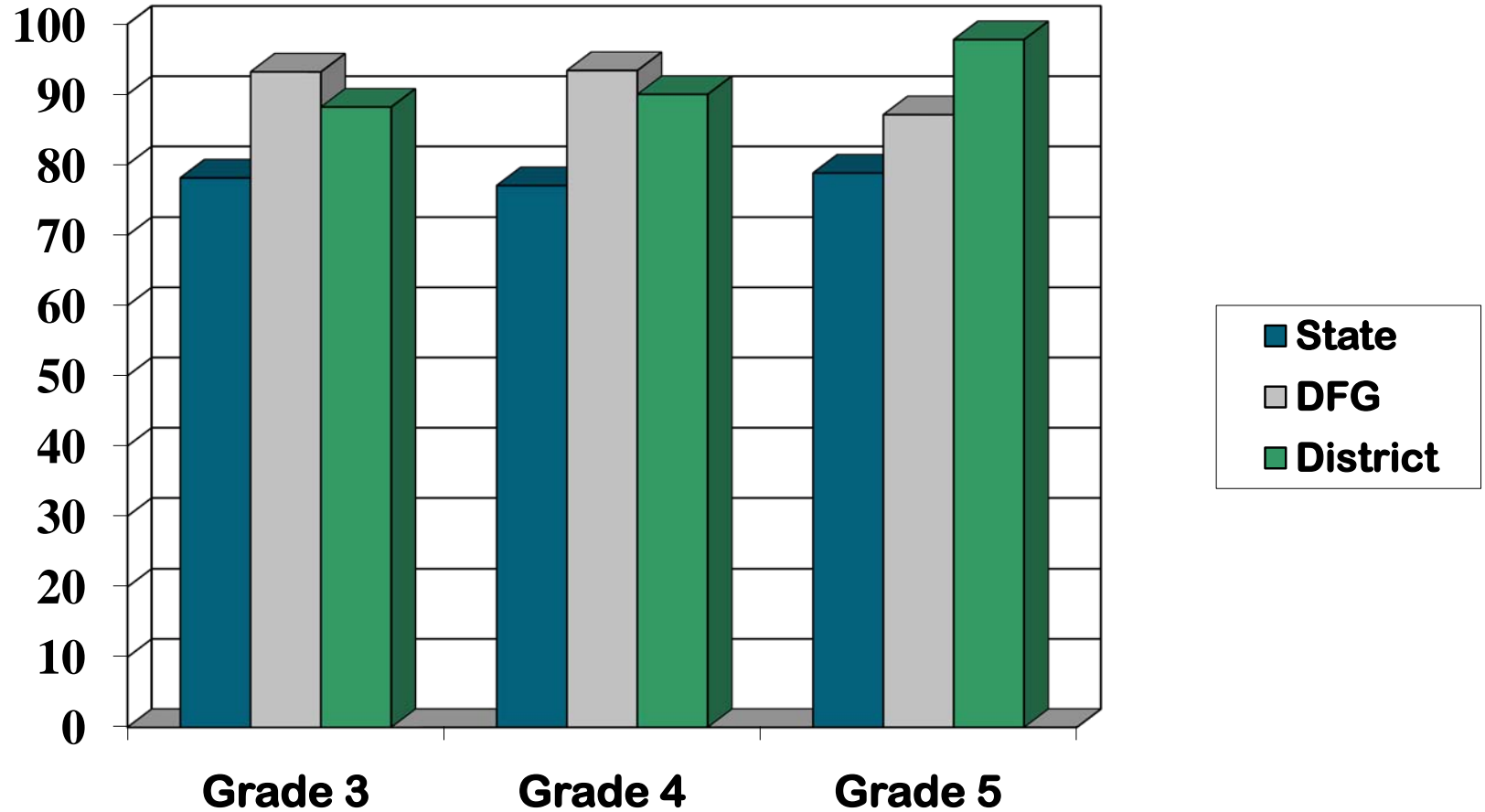
NJ ASK 3-4-5 Language Arts 2010

Total Students % Proficient/Advanced Proficient



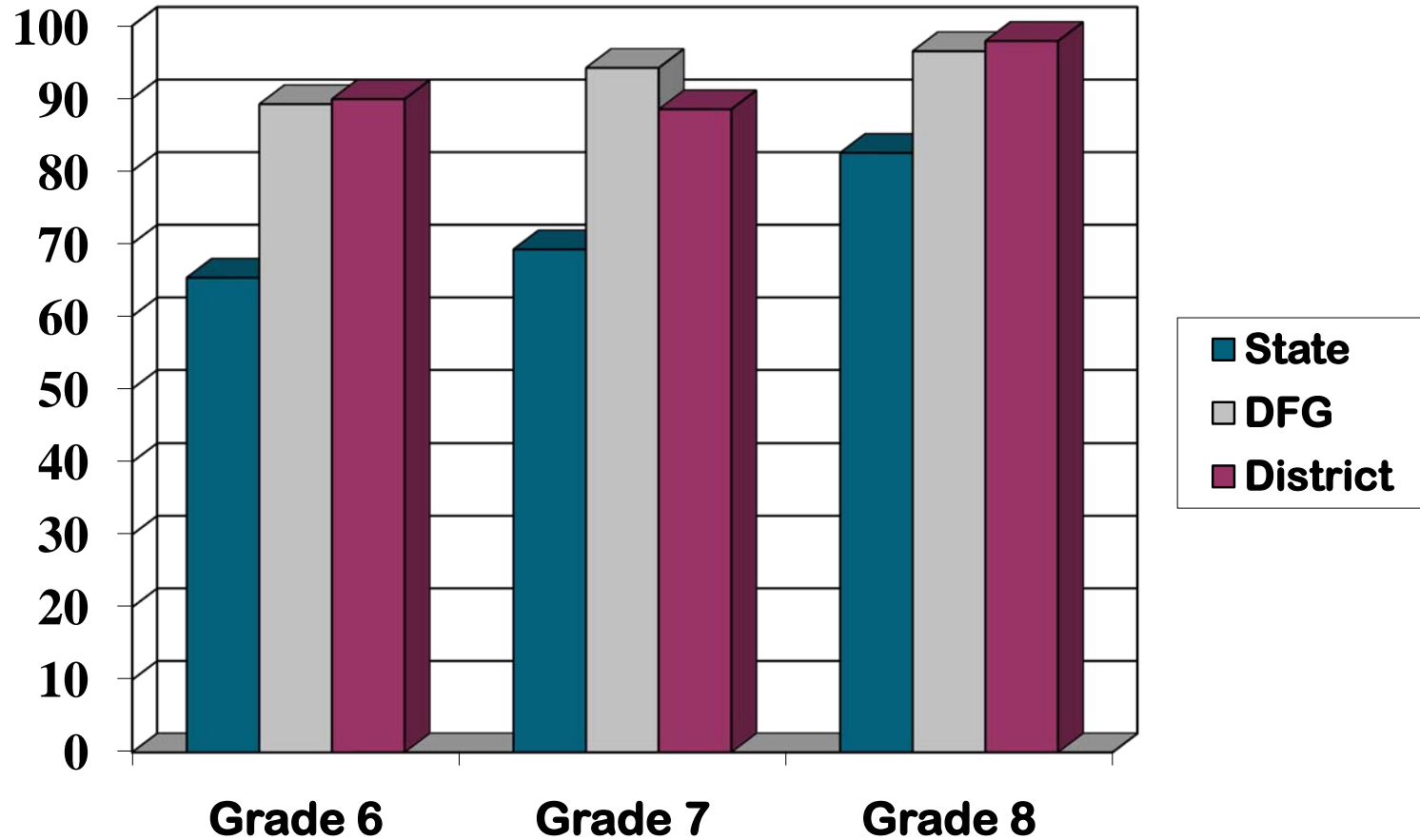
NJ ASK 3-4-5 Mathematics 2010

Total Students % Proficient/Advanced Proficient



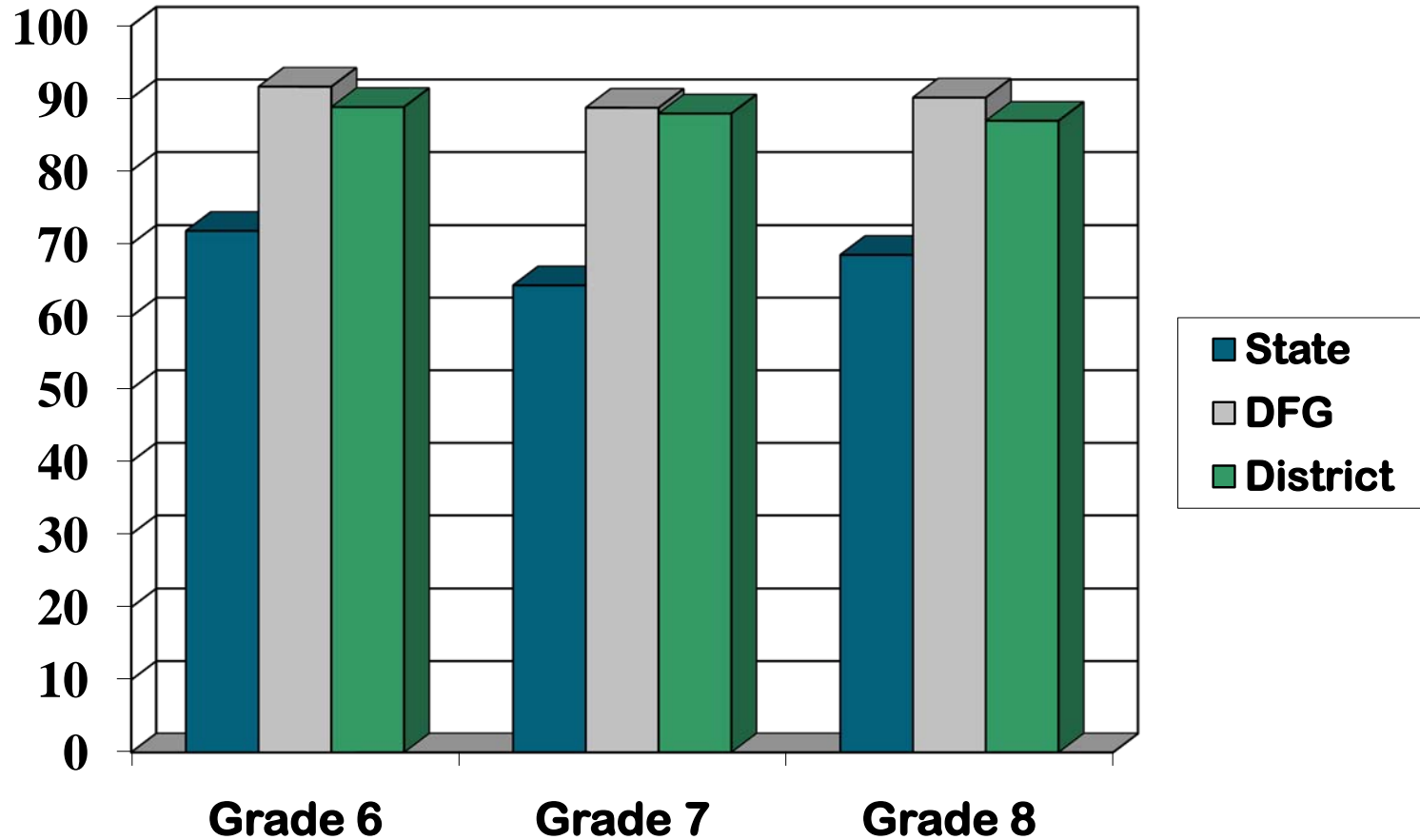
NJ ASK 6-7-8 Language Arts 2010

Total Students % Proficient/Advanced Proficient



NJ ASK 6-7-8 Mathematics 2010

Total Students % Proficient/Advanced Proficient



NJ ASK 3-8 and HSPA Mean Score Performance

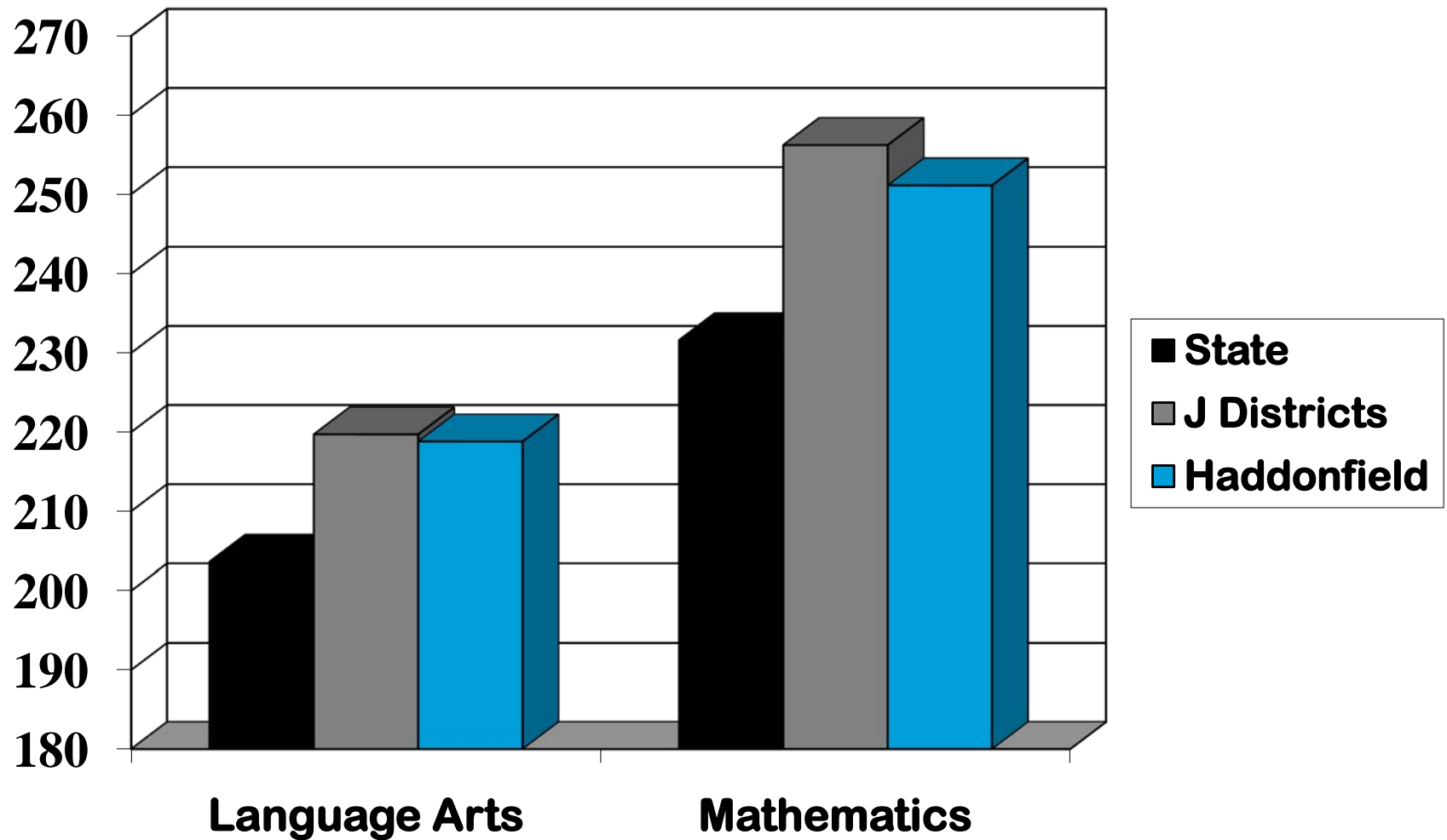


Comparisons of state, DFG, district and school mean score performance for:

- Total group of students assessed
- General Education students
- Special Education students

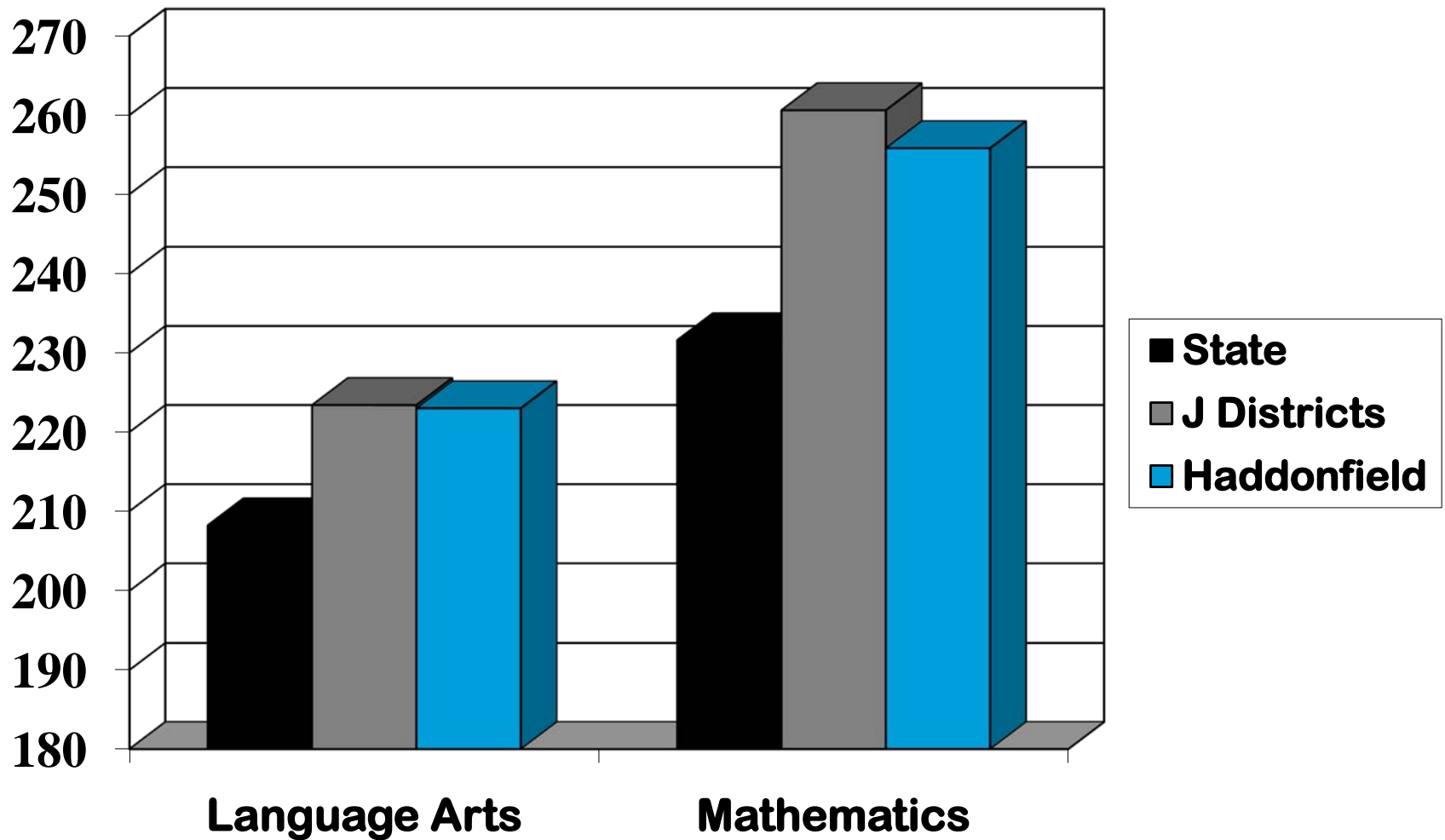
3rd Grade NJ ASK 2010

Scale Score Mean- Total Student Population

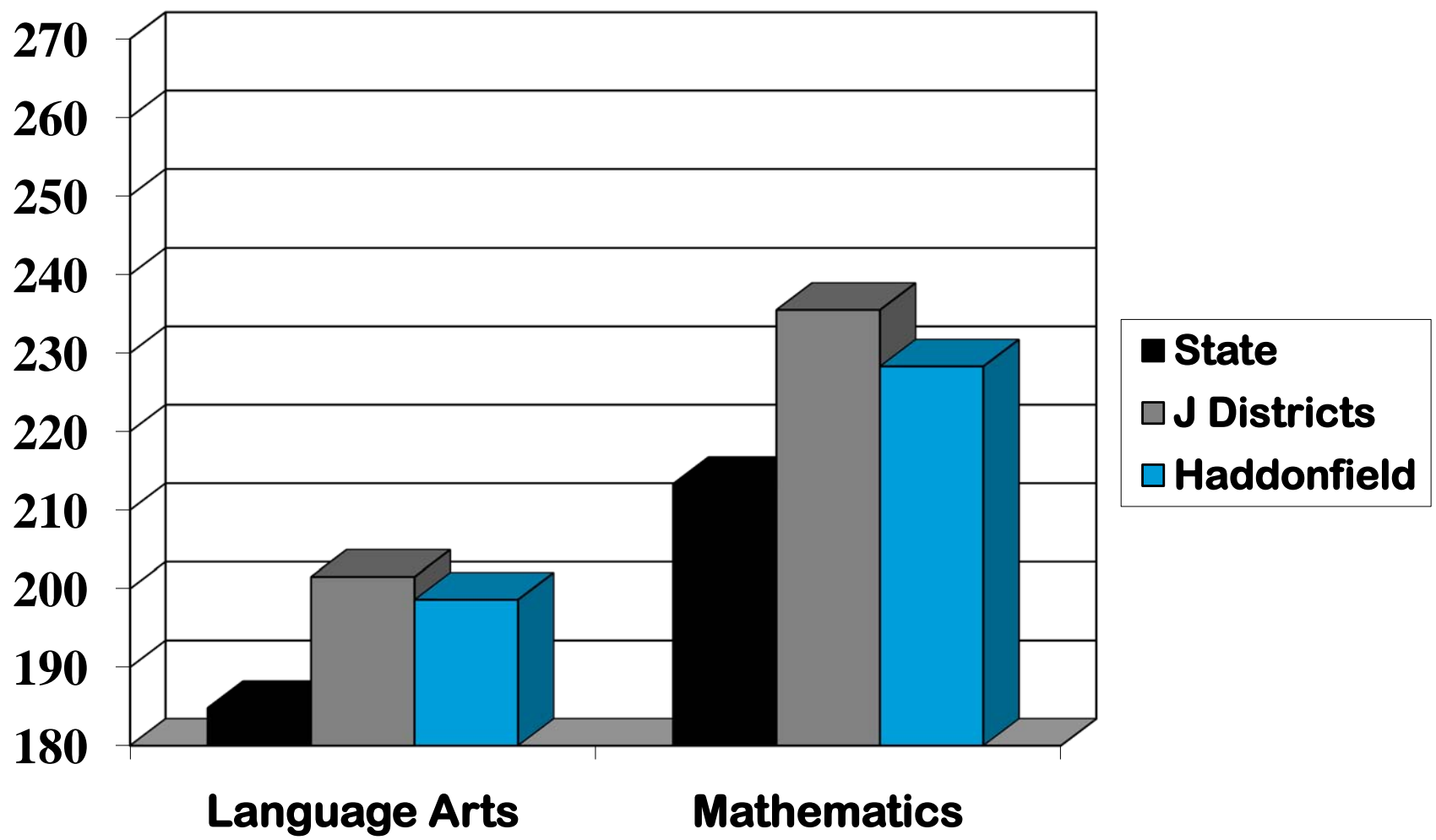


3rd Grade NJ ASK 2010

Scale Score Mean- General Education

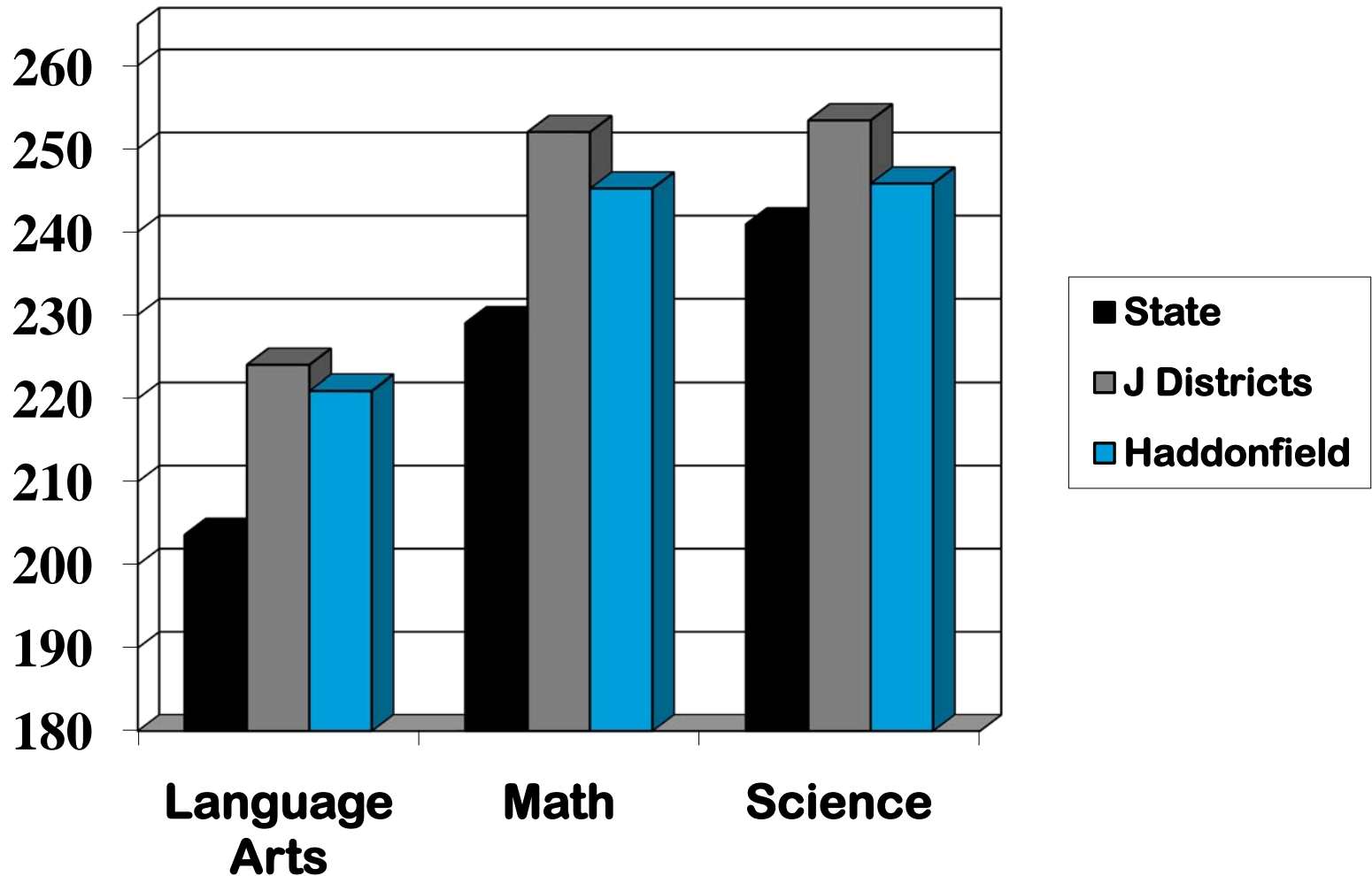


3rd Grade NJ ASK 2010 Scale Score Mean- Special Education



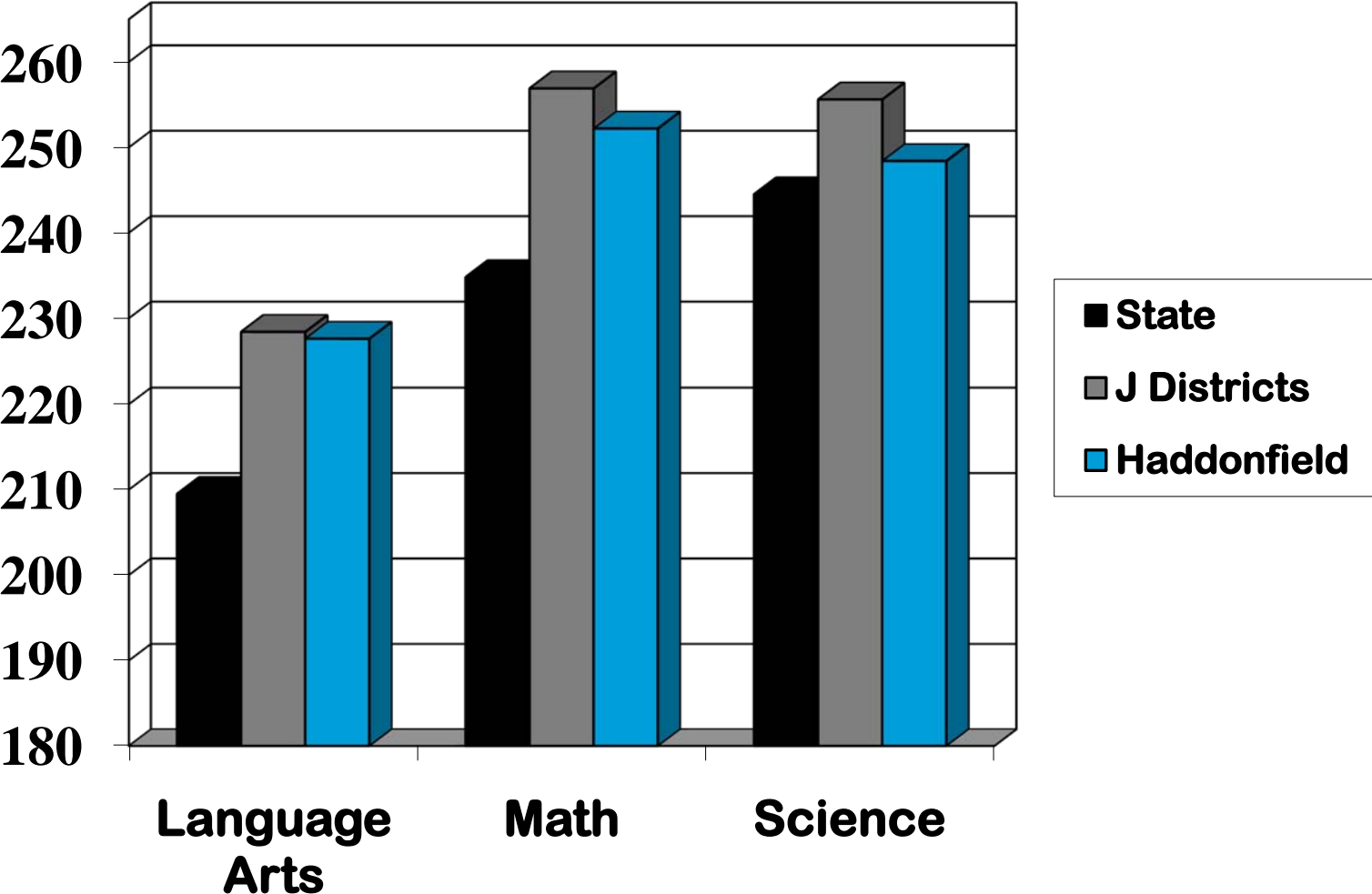
4th Grade NJ ASK 2010

Scale Score Mean – Total Student Population

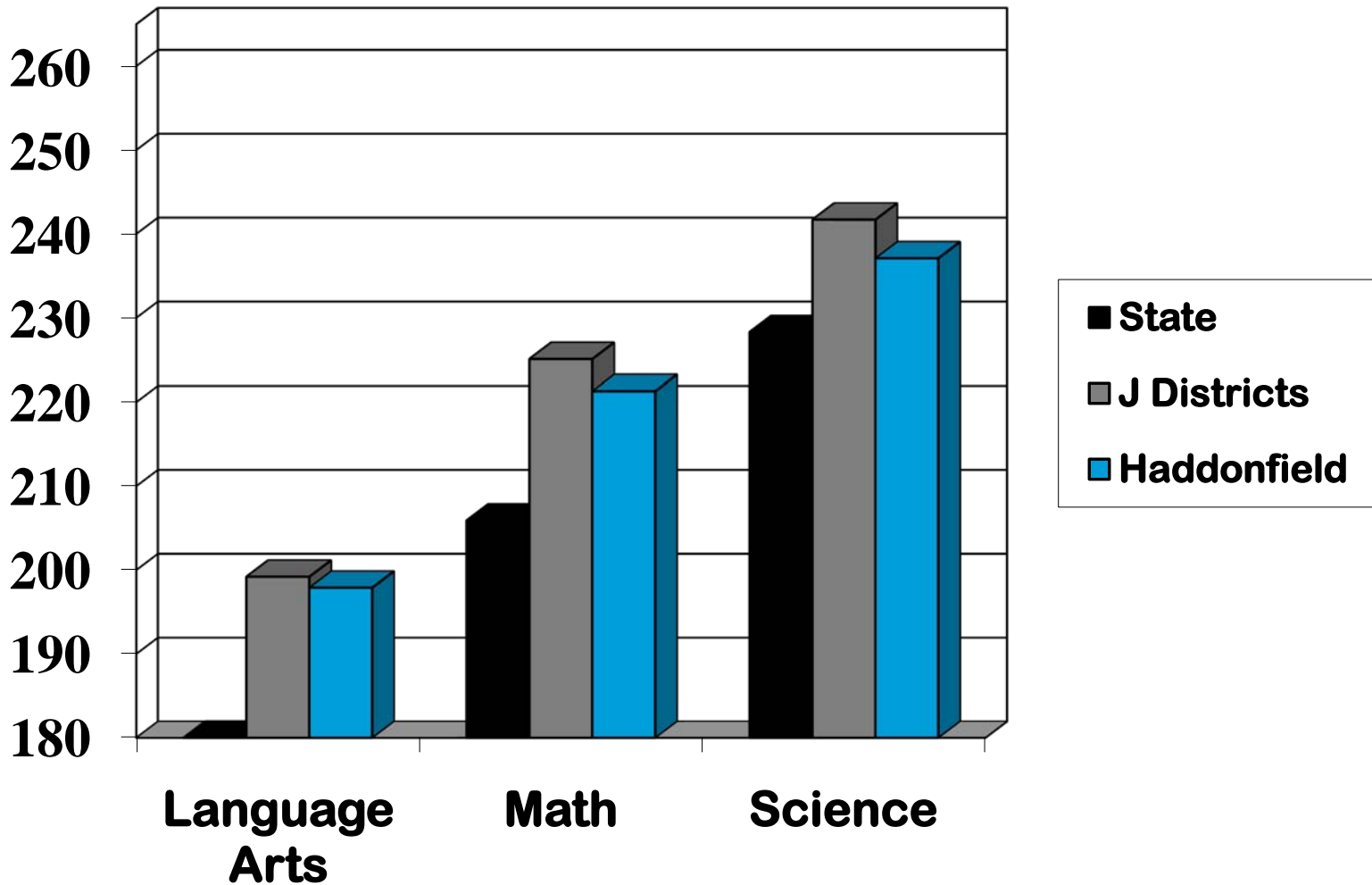


4th Grade NJ ASK 2010

Scale Score Mean - General Education

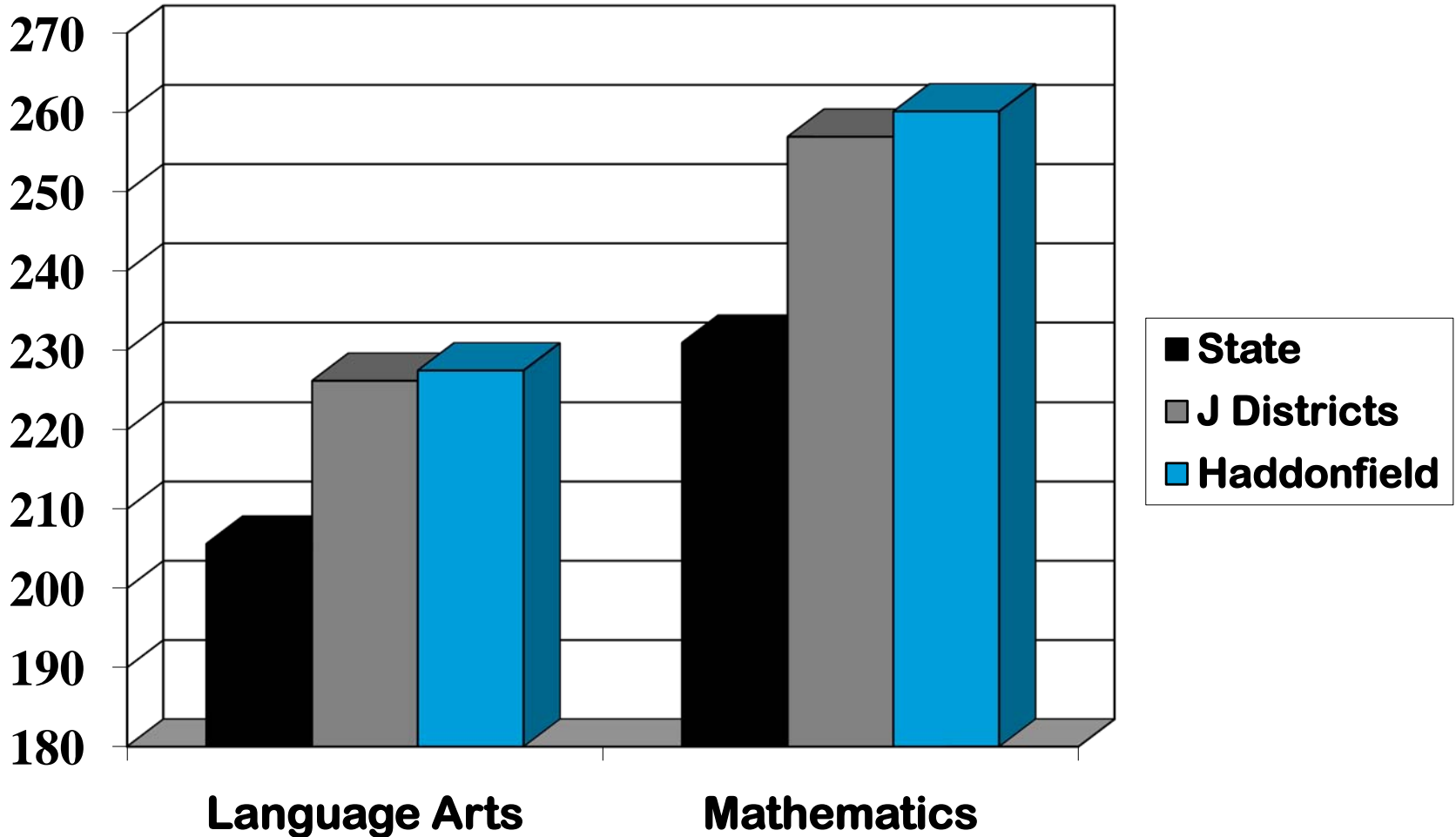


4th Grade NJ ASK 2010 Scale Score Mean – Special Education



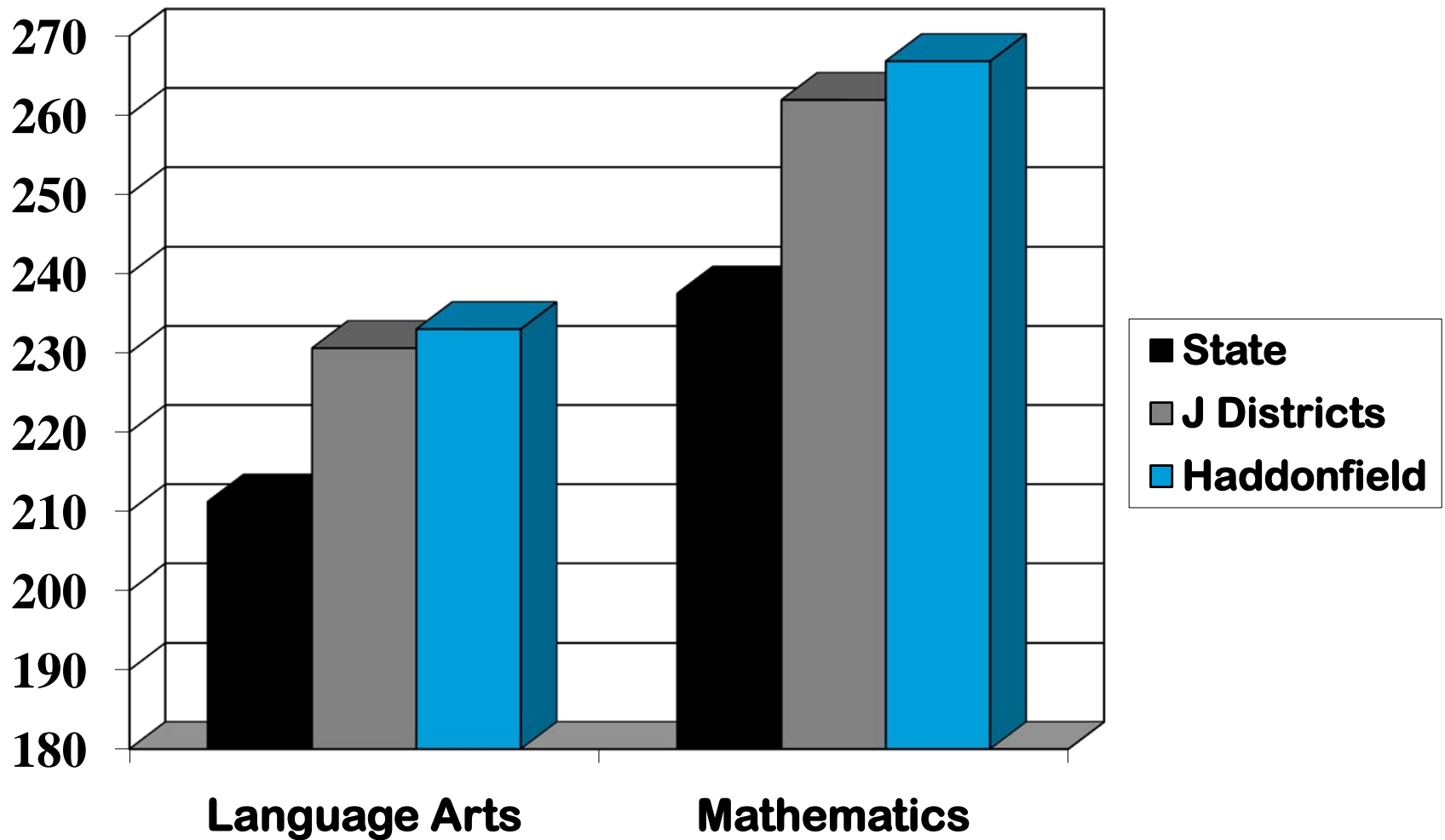
5th Grade NJ ASK 2010

Scale Score Mean-Total Student Population

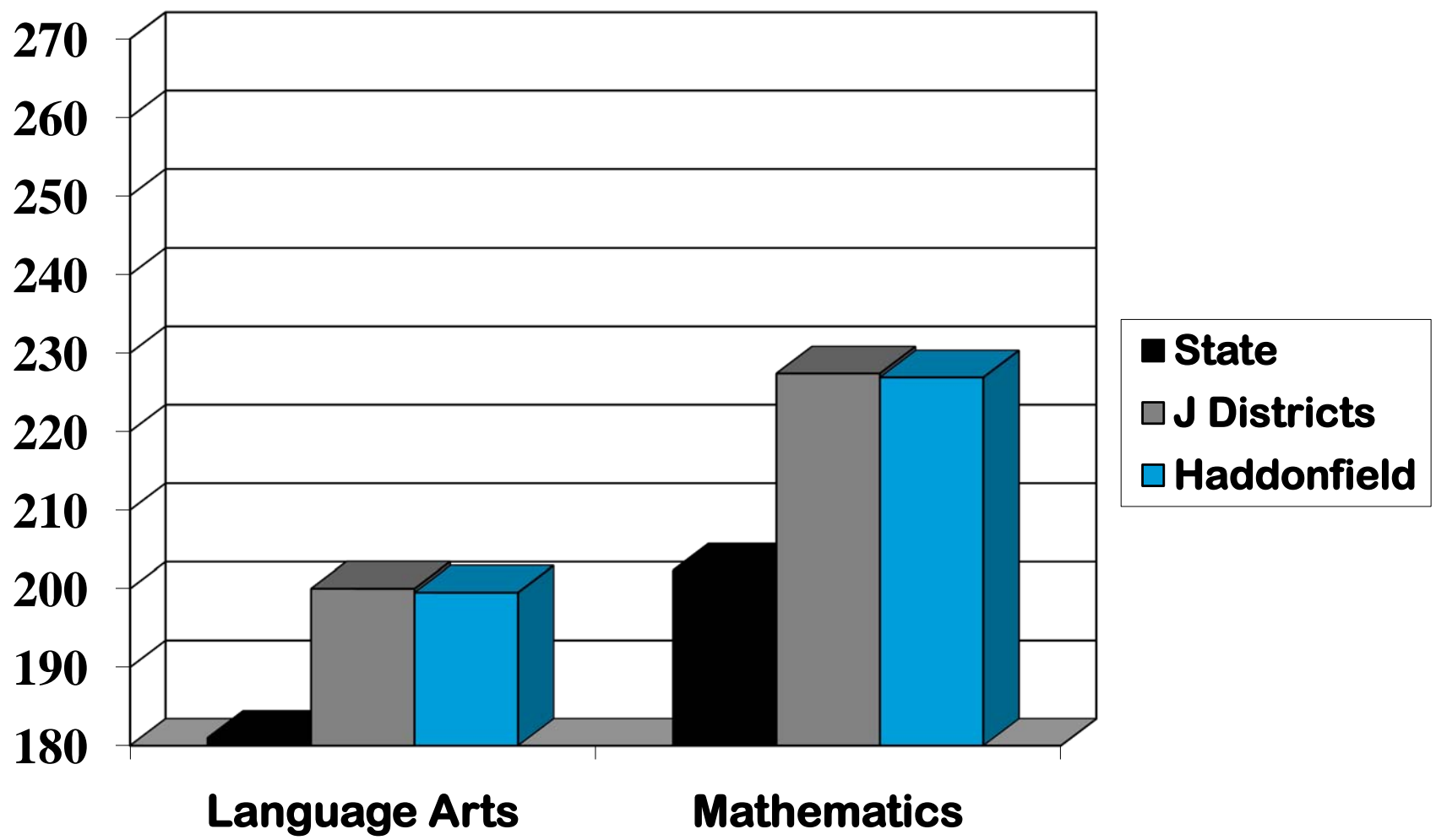


5th Grade NJ ASK 2010

Scale Score Mean- General Education

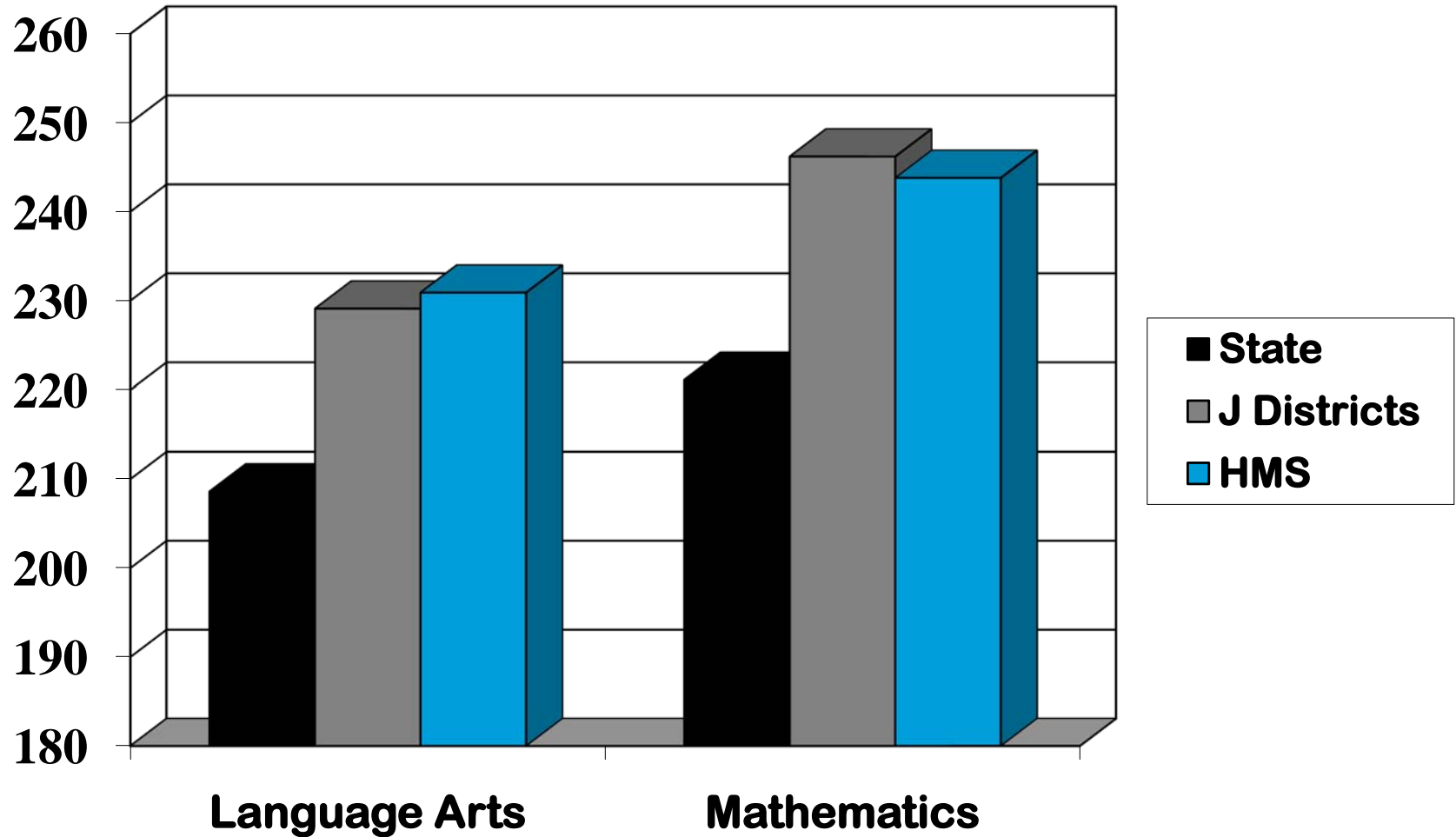


5th Grade NJ ASK 2010 Scale Score Mean- Special Education



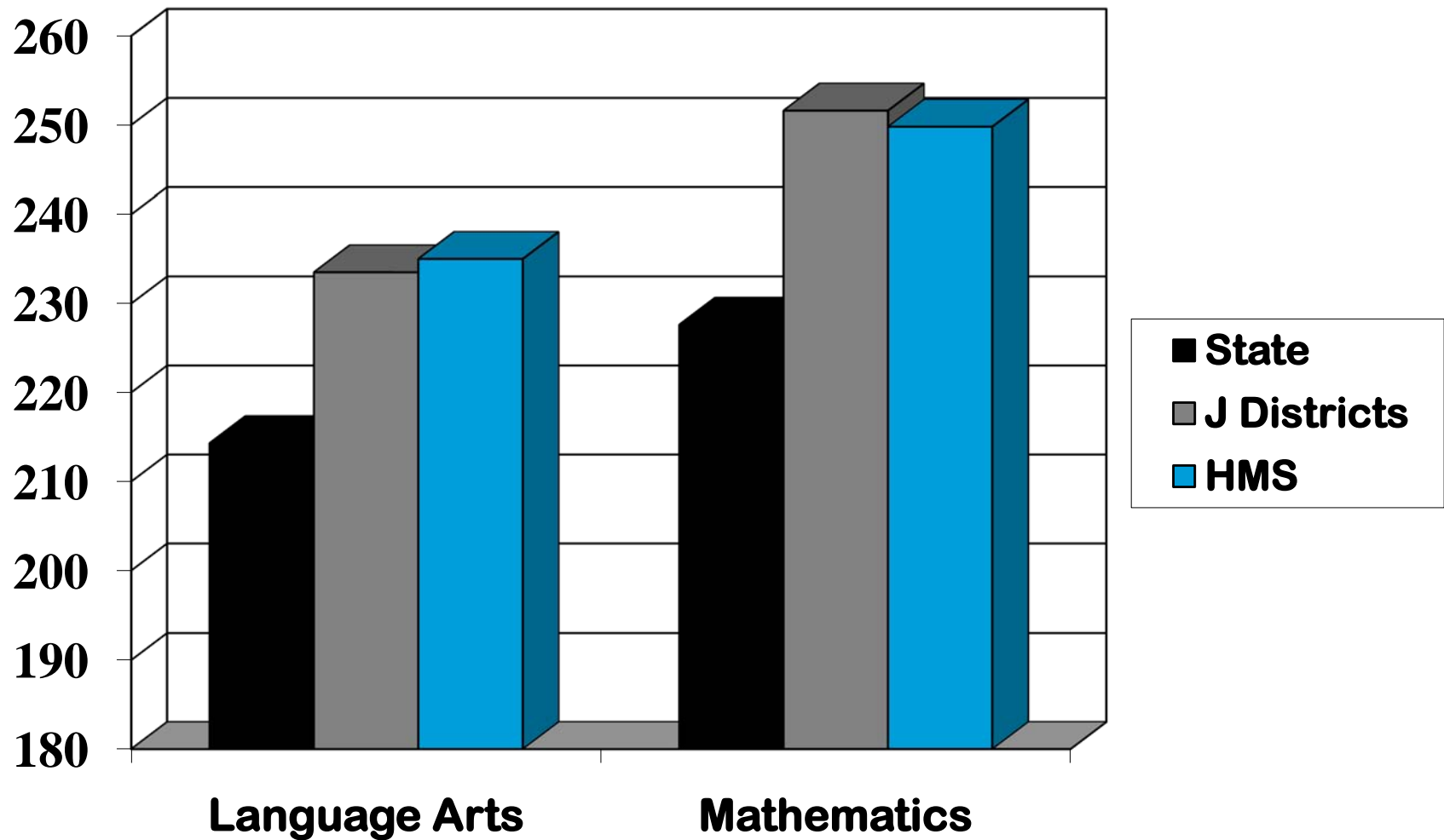
6th Grade NJ ASK 2010

Scale Score Mean-Total Student Population

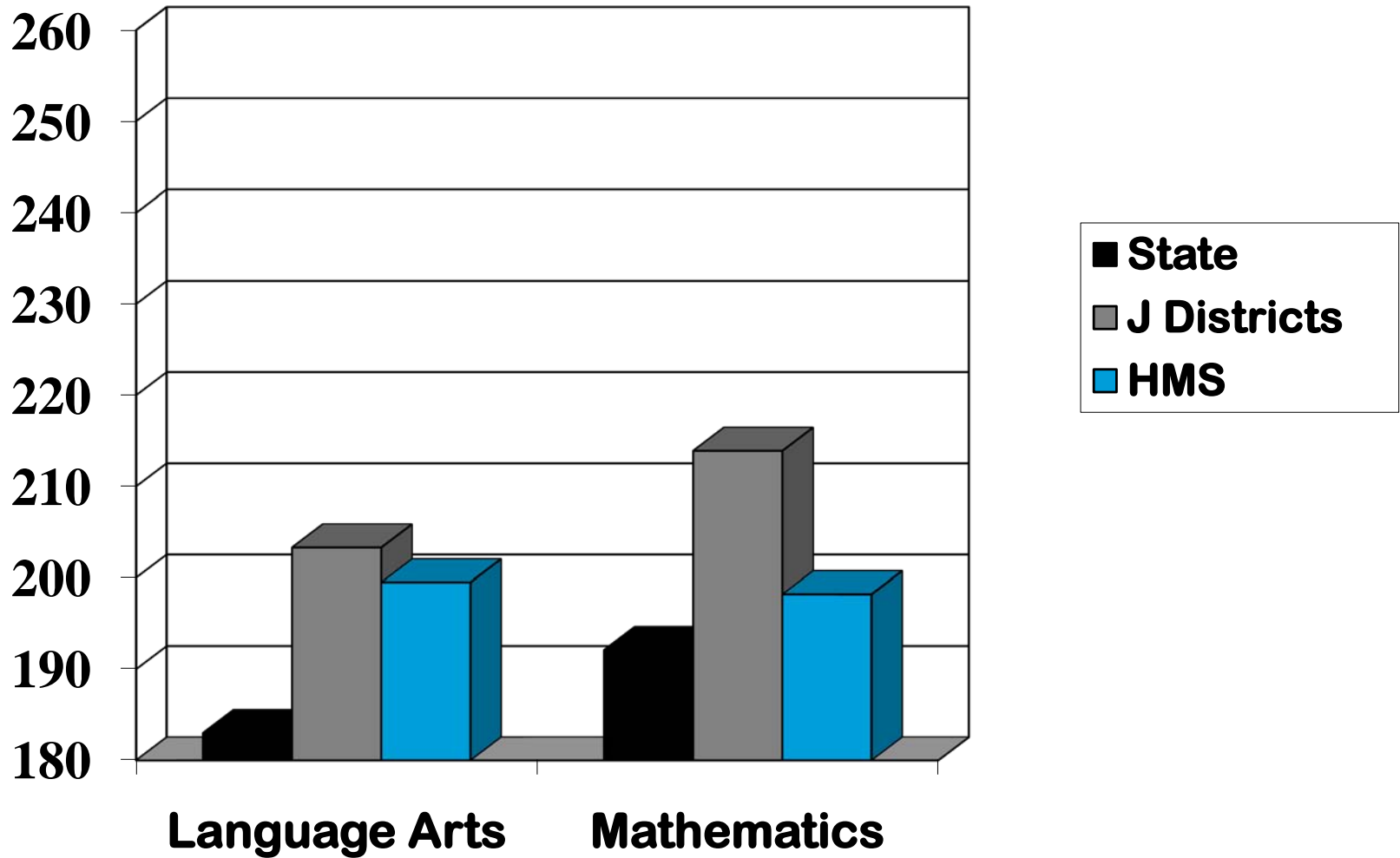


6th Grade NJ ASK 2010

Scale Score Mean- General Education

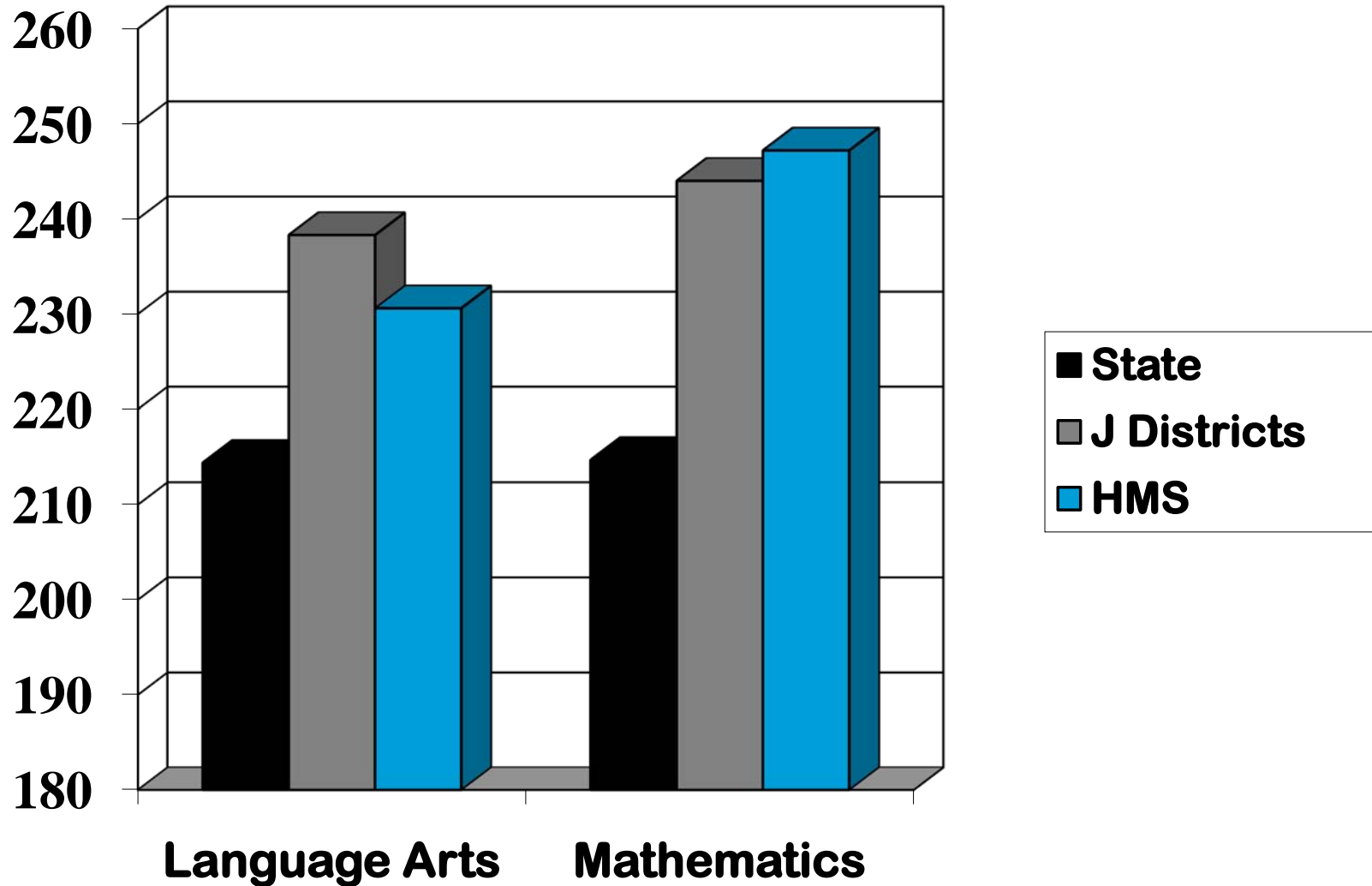


6th Grade NJ ASK 2010 Scale Score Mean- Special Education



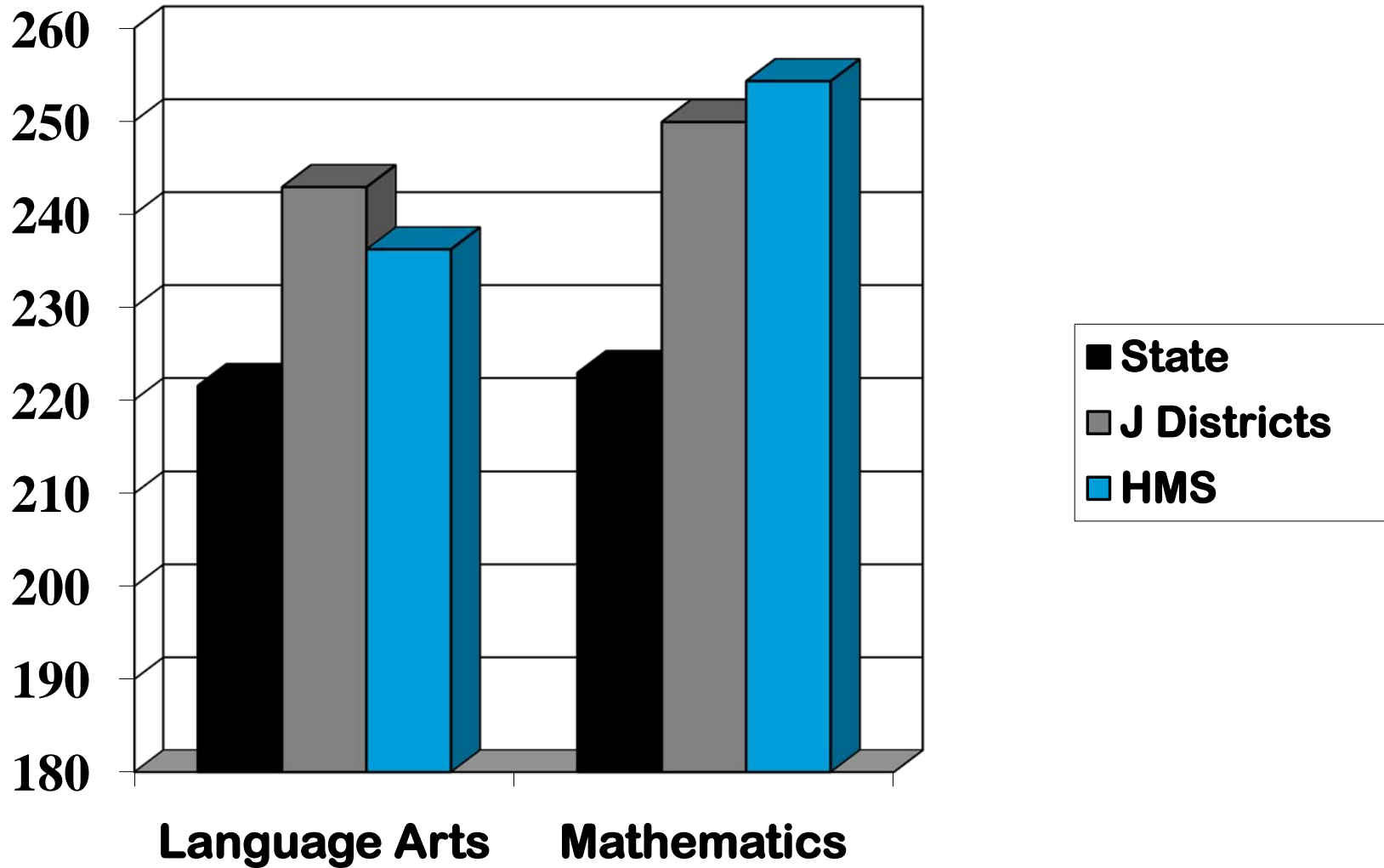
7th Grade NJ ASK 2010

Scale Score Mean - Total Population



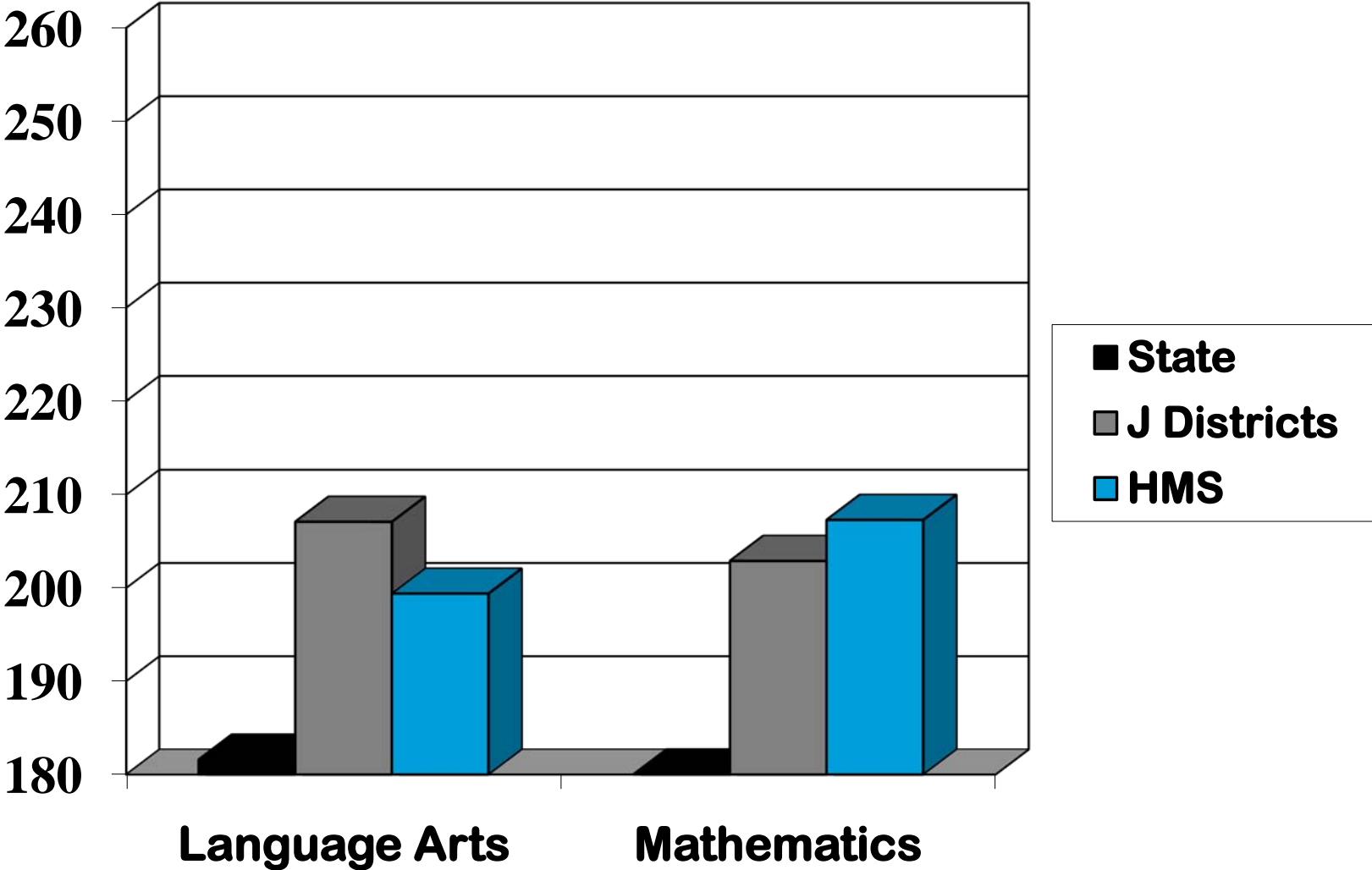
7th Grade NJ ASK 2010

Scale Score Mean- General Education



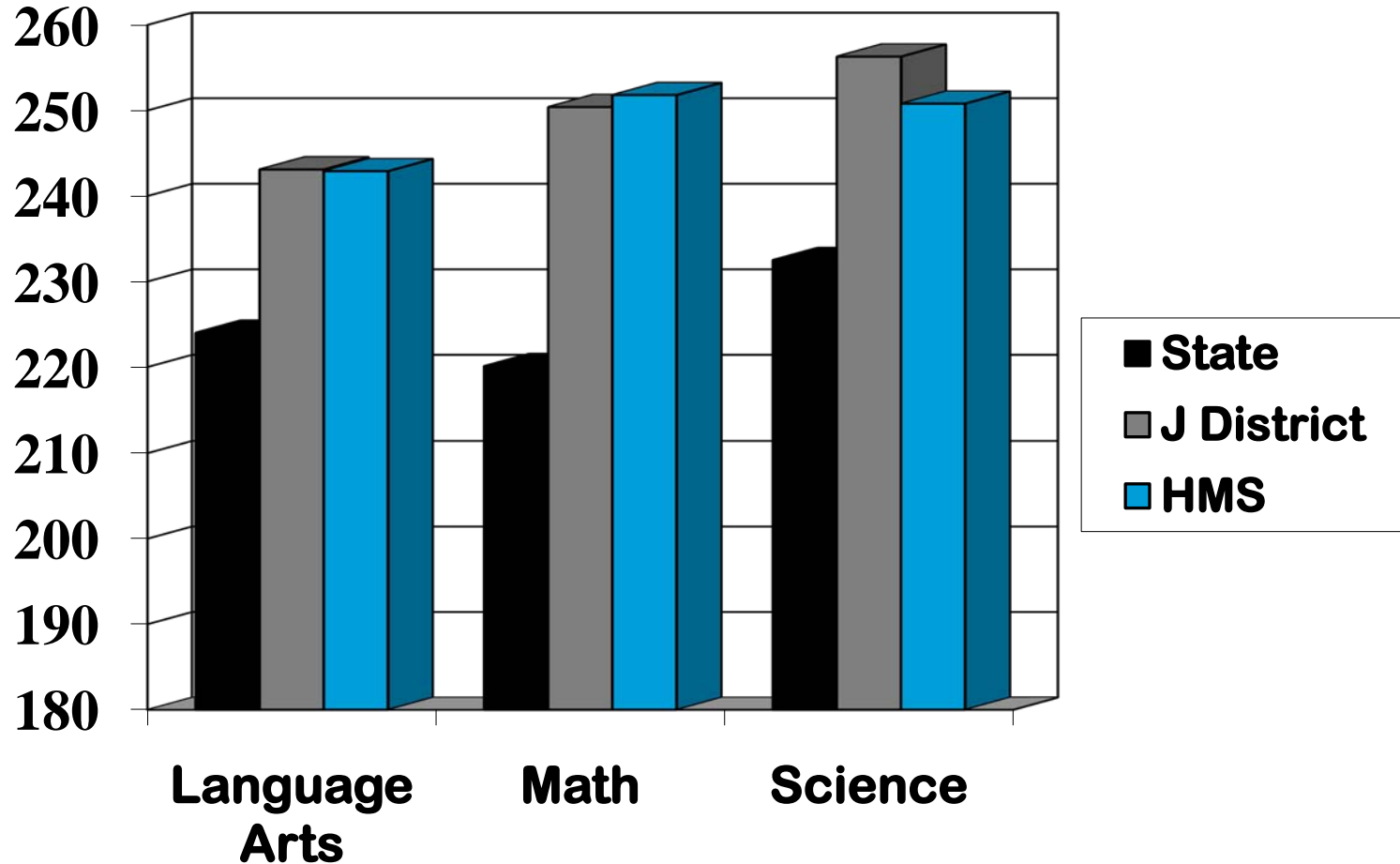
7th Grade NJ ASK 2010

Scale Score Mean - Special Education

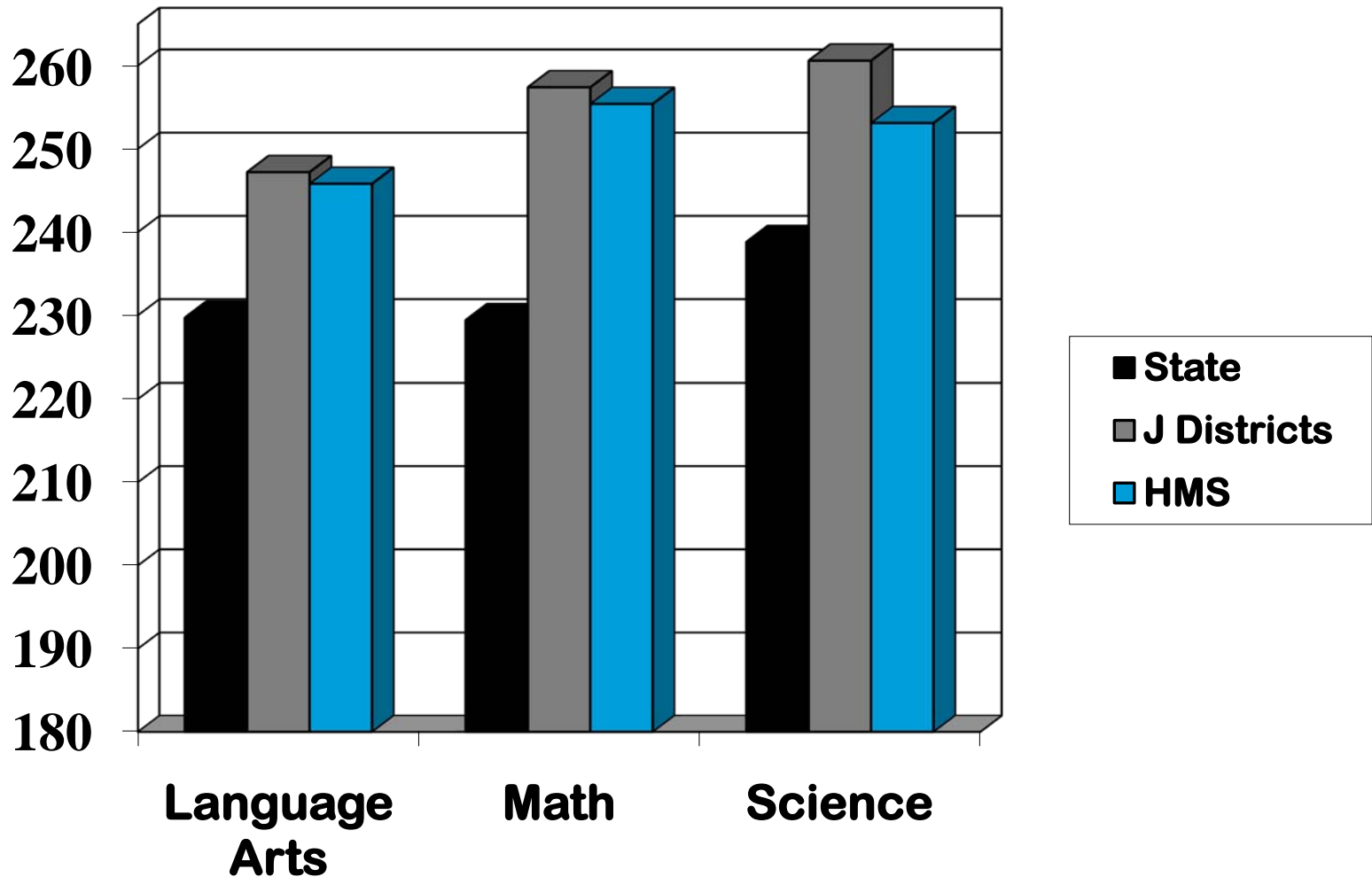


8th Grade NJ ASK 2010

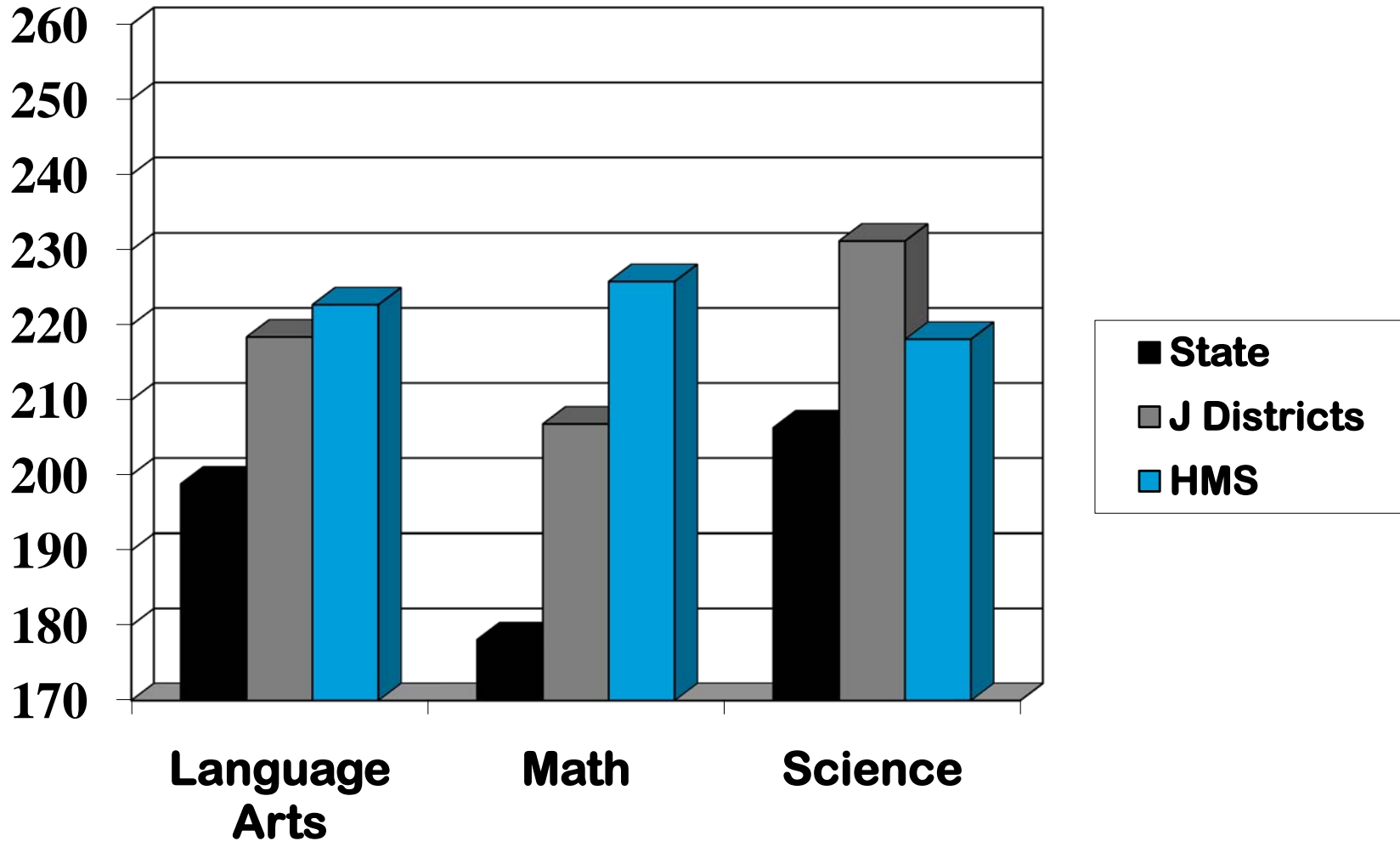
Scale Score Mean – Total Student Population



8th Grade NJ ASK 2010 Scale Score Mean - General Ed.

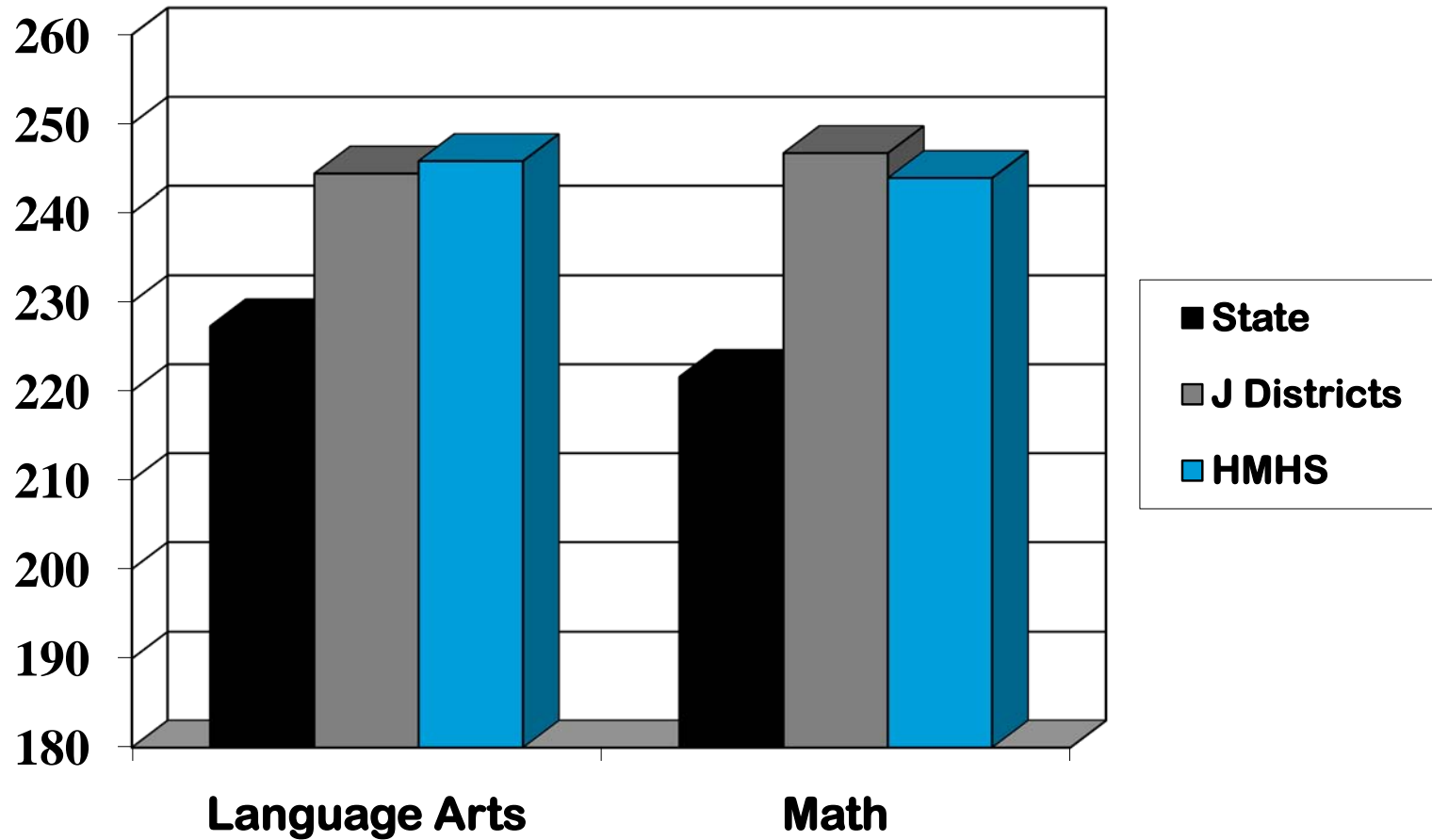


8th Grade NJ ASK 2010 Scale Score Mean - Special Ed



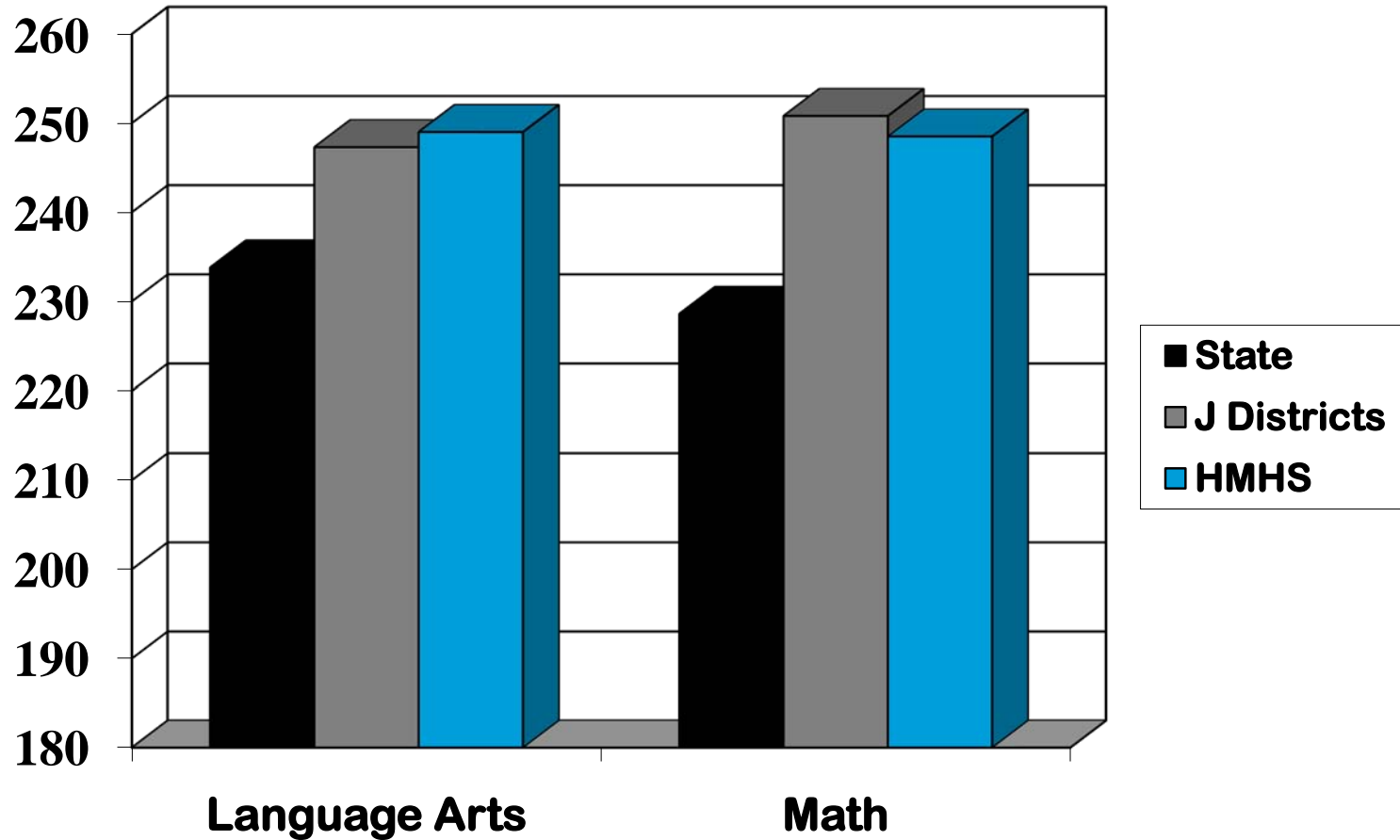
11th Grade HSPA 2010

Scale Score Mean – Total Student Population

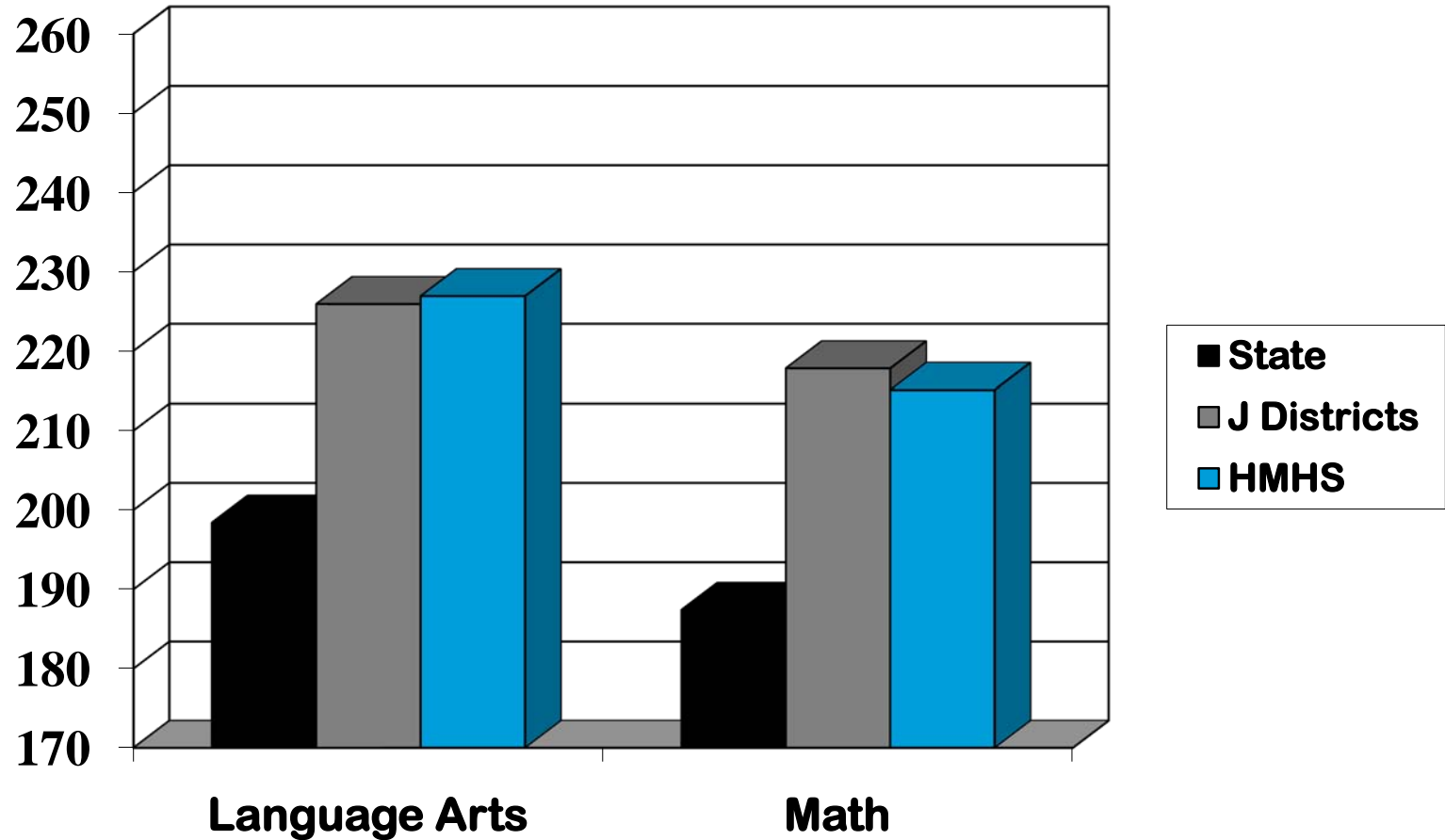


11th Grade HSPA 2010

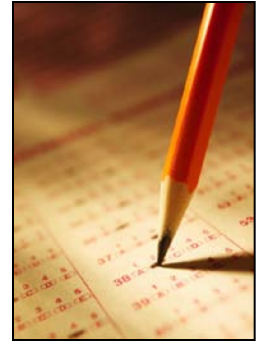
Scale Score Mean – General Education



11th Grade HSPA 2010 Scale Score Mean – Special Education

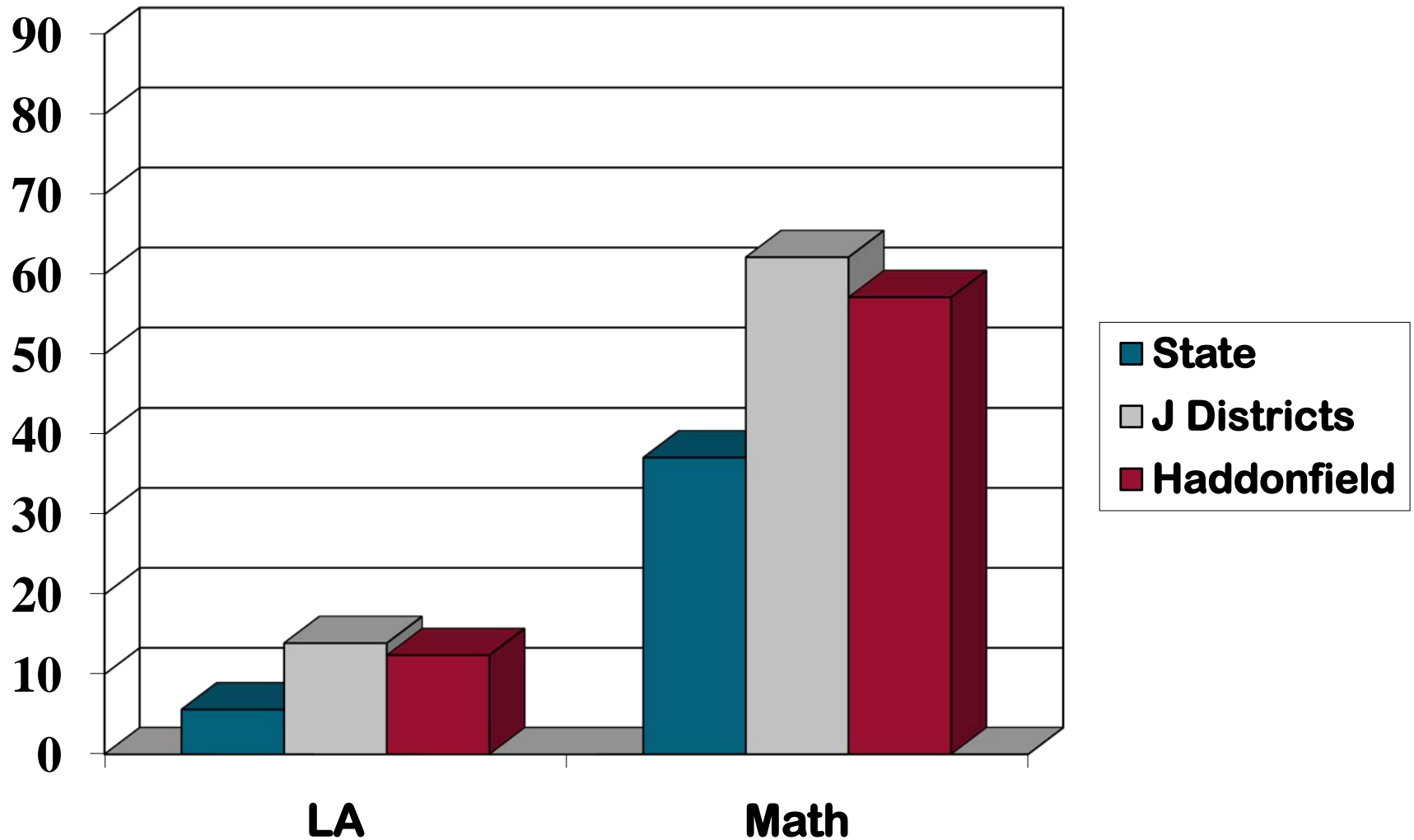


Additional Important DFG Comparisons

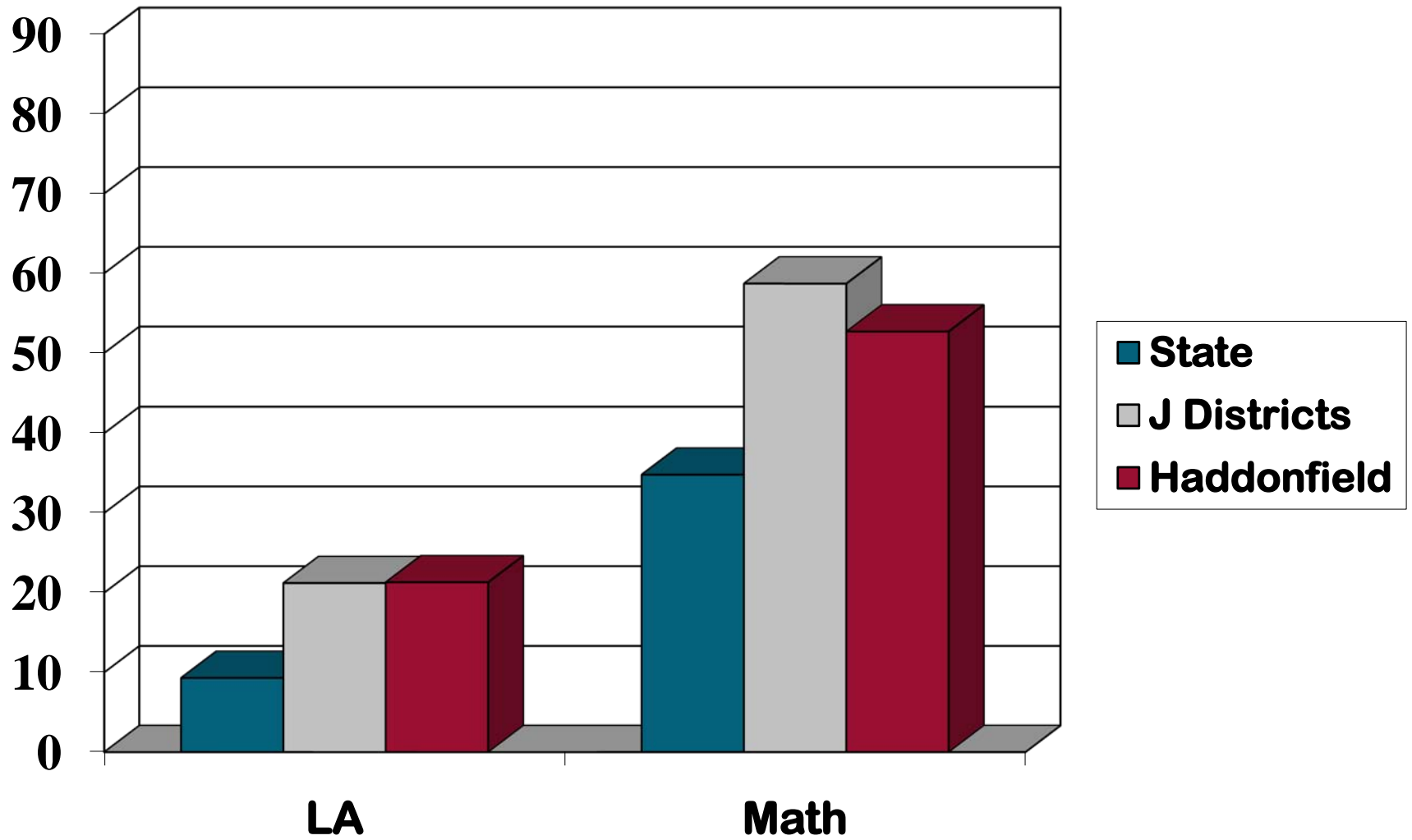


- What is our Advanced Proficient rate as compared to other “J” Districts?
- What are our pass rates (total proficient and advanced proficient) for Special Education as compared to other “J” Districts?

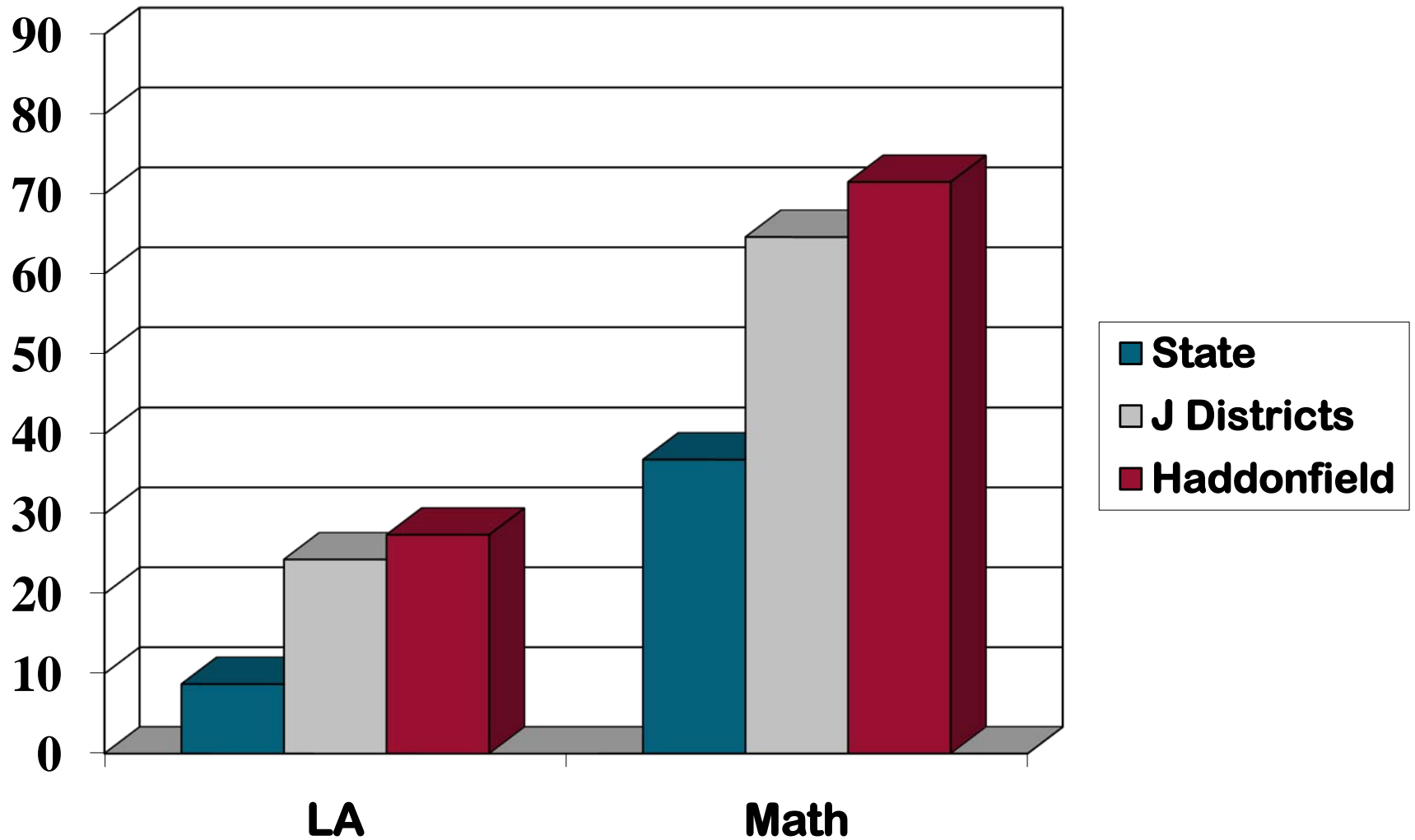
3rd Grade NJ ASK 2010 – Total Students Percent Advanced Proficient



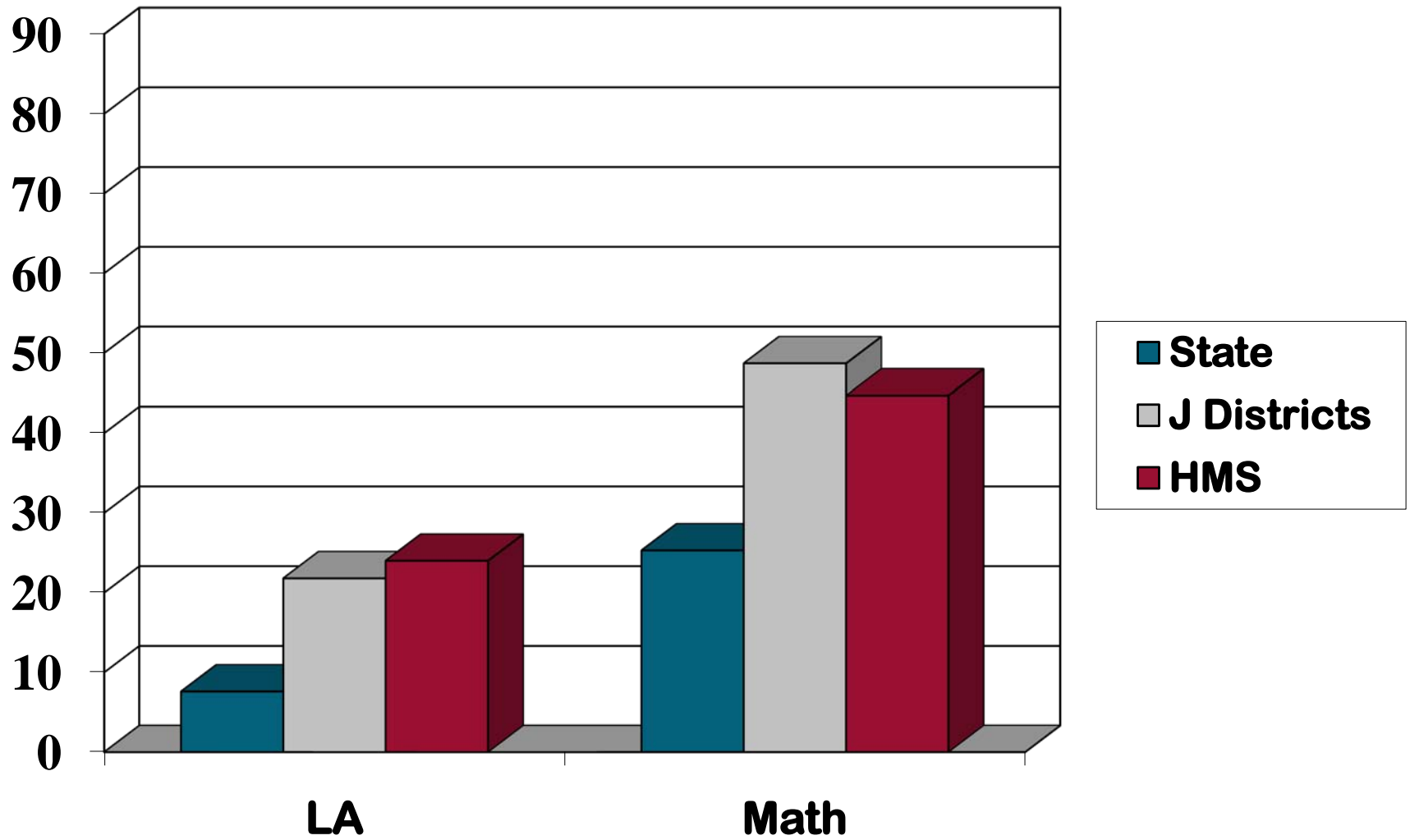
4th Grade NJ ASK 2010 – Total Students Percent Advanced Proficient



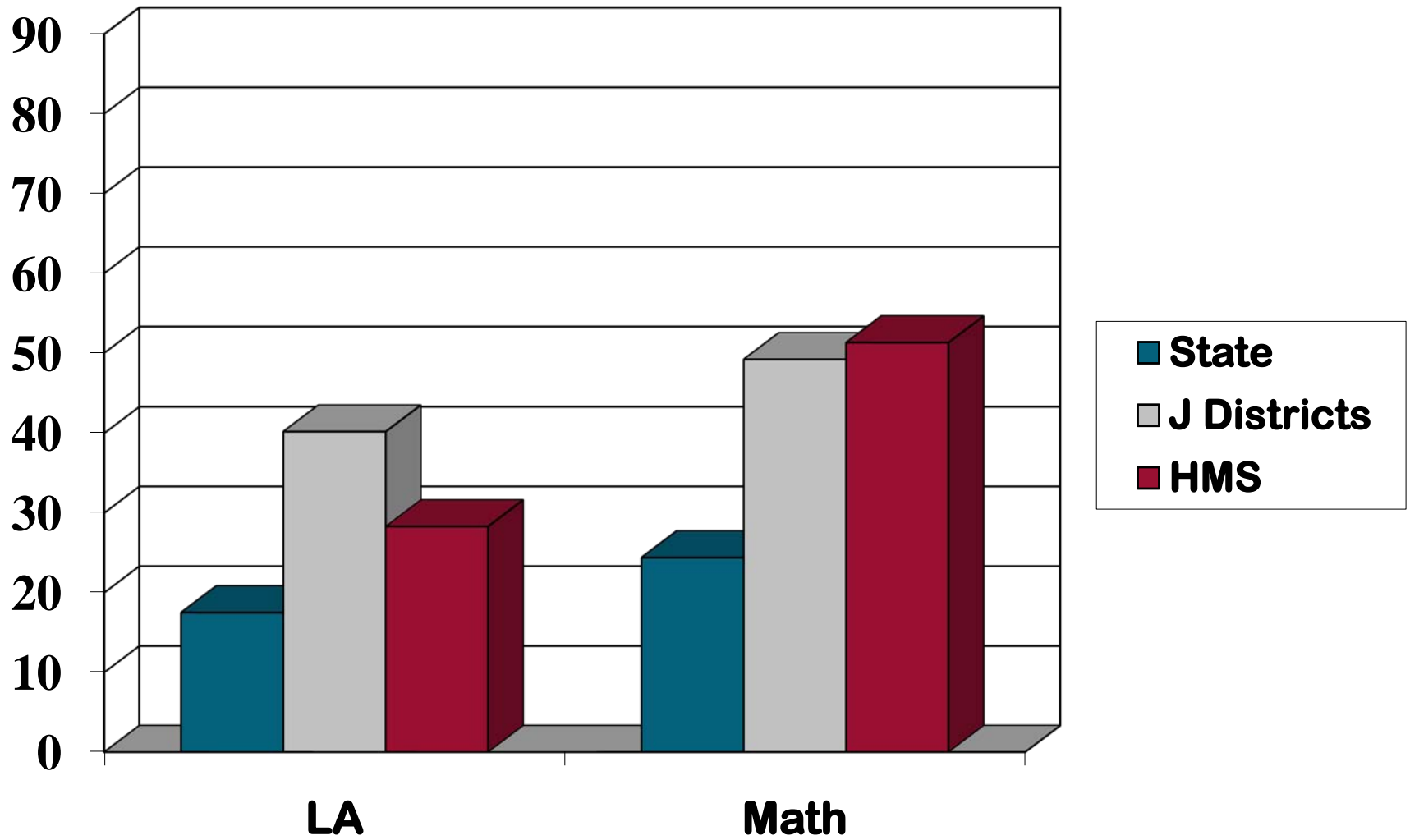
5th Grade NJ ASK 2010 – Total Students Percent Advanced Proficient



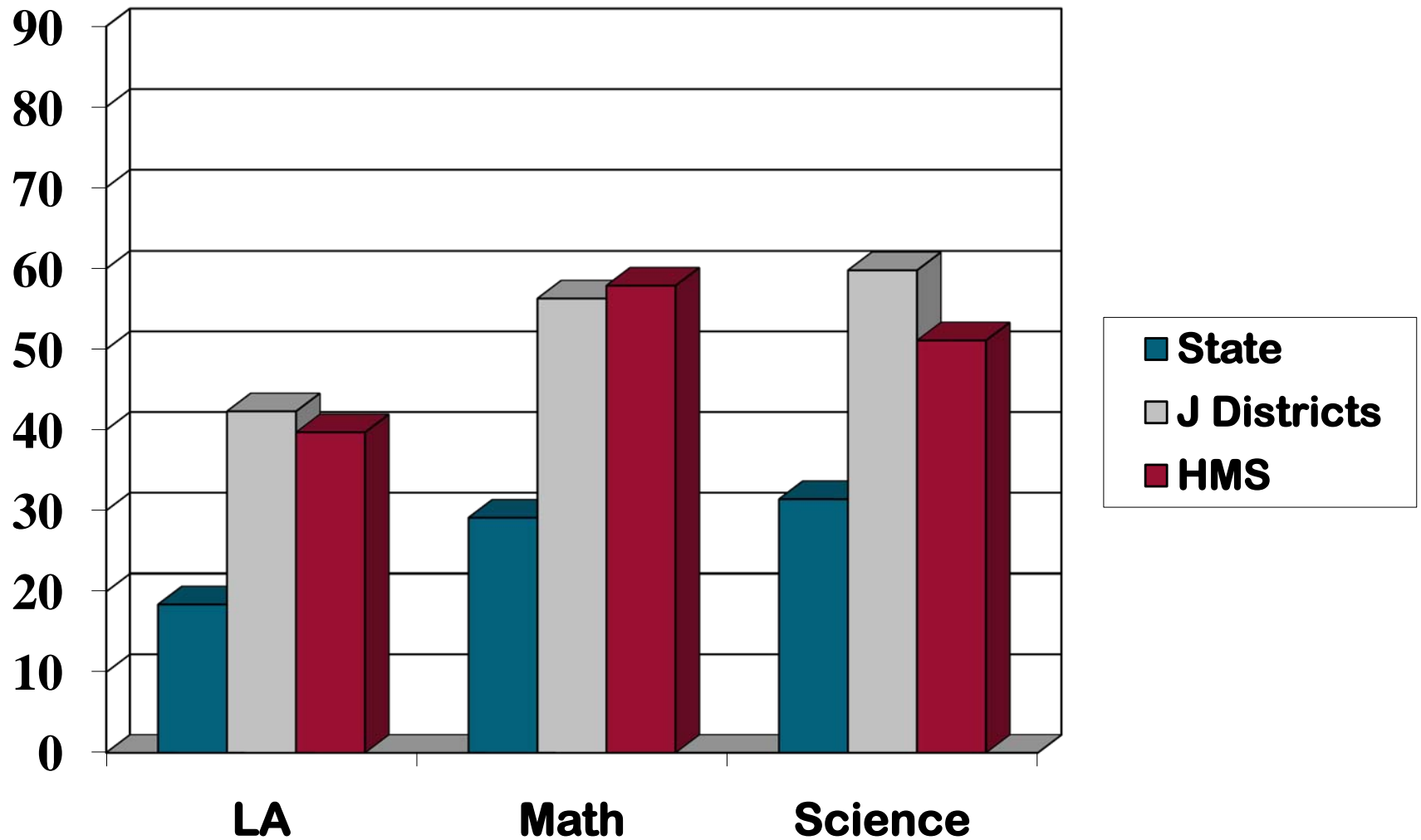
6th Grade NJ ASK 2010 – Total Students Percent Advanced Proficient



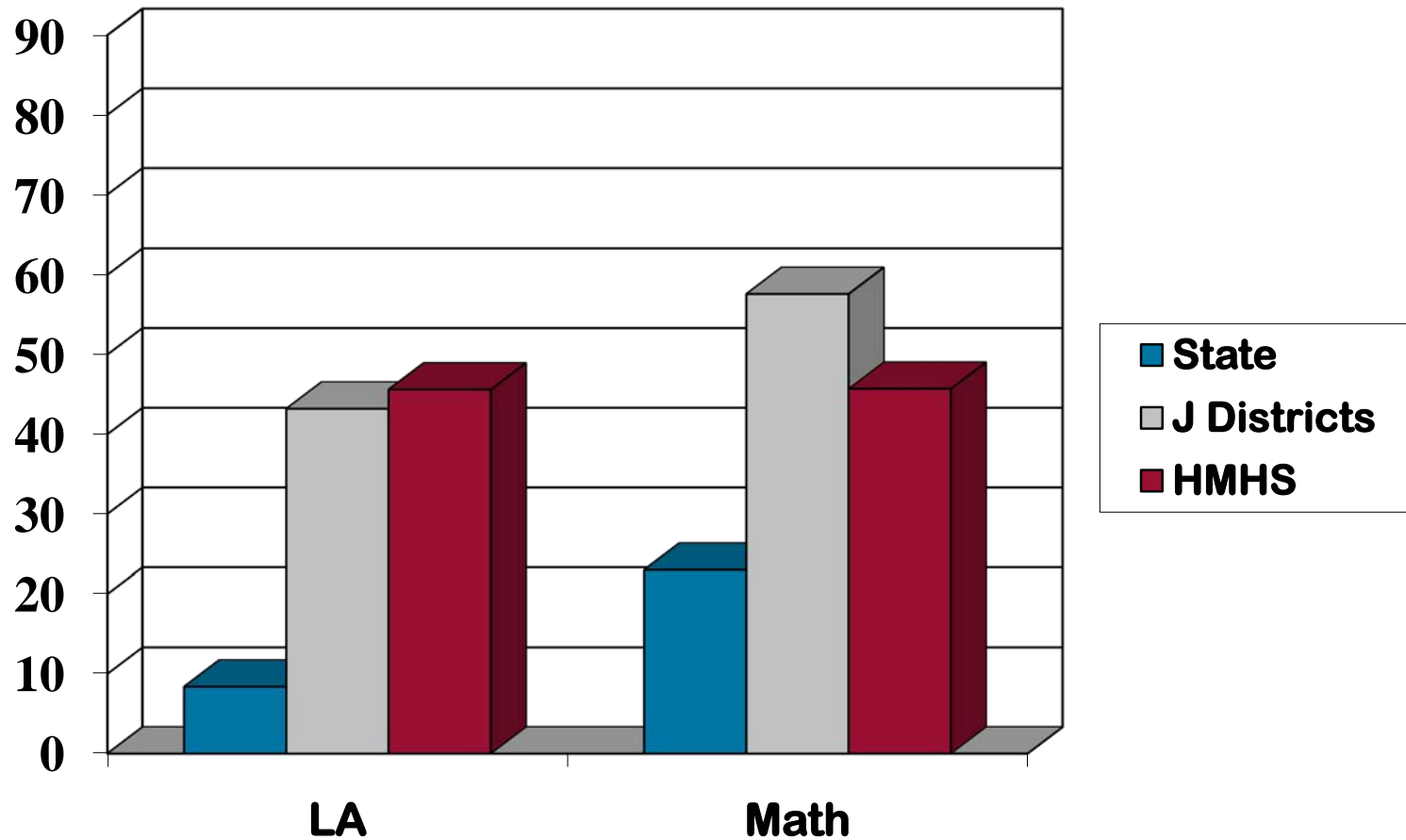
7th Grade NJ ASK 2010 – Total Students Percent Advanced Proficient



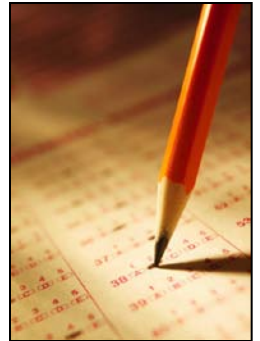
8th Grade NJ ASK 2010 – Total Students Percent Advanced Proficient



11th Grade HSPA 2010 – Total Students Percent Advanced Proficient

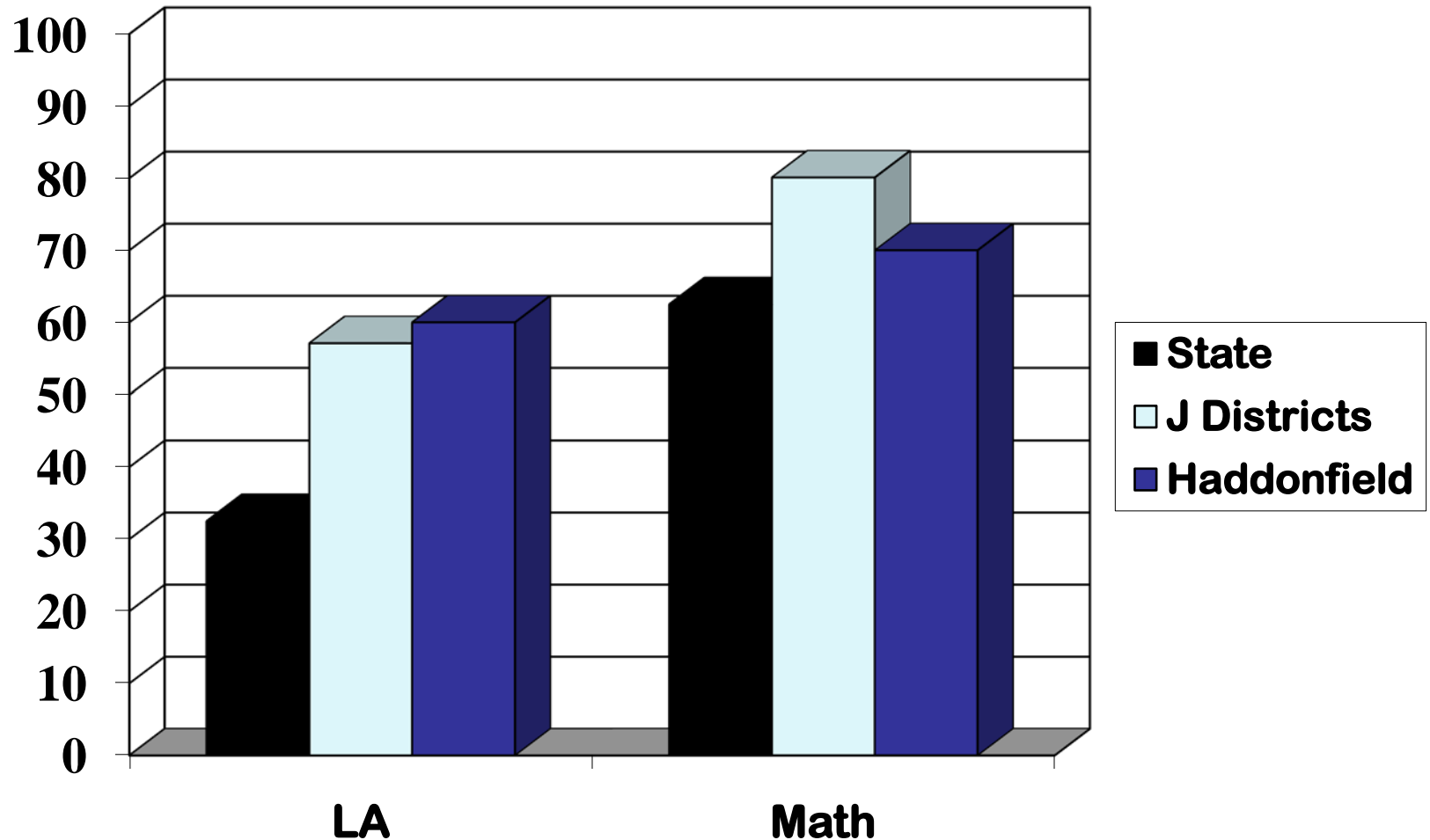


NJ ASK/HSPA 2010 Special Education Results

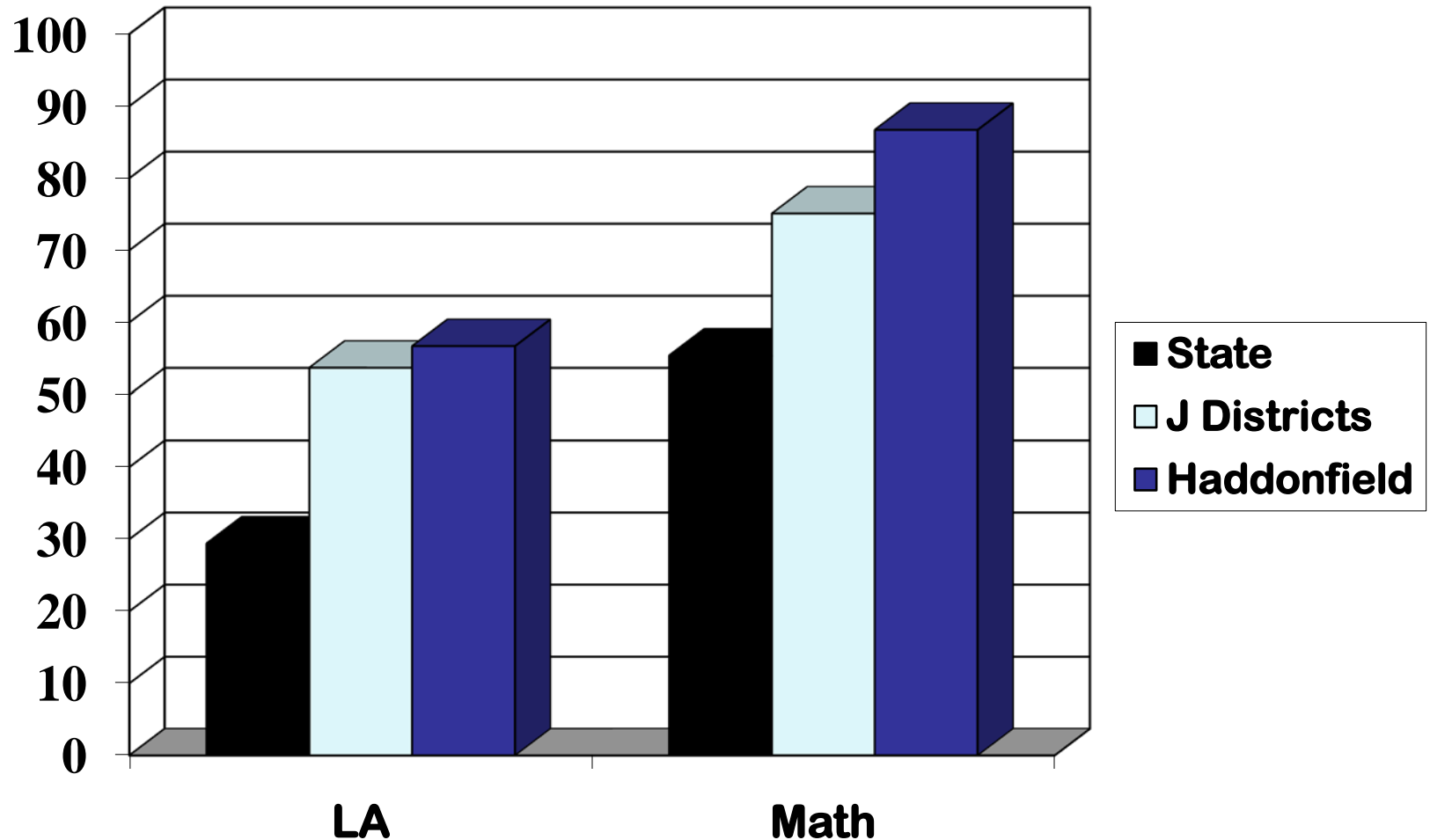


State, DFG, district and building results
by grade levels - proficient and advanced
proficient (pass rate) percentages for
Special Education students

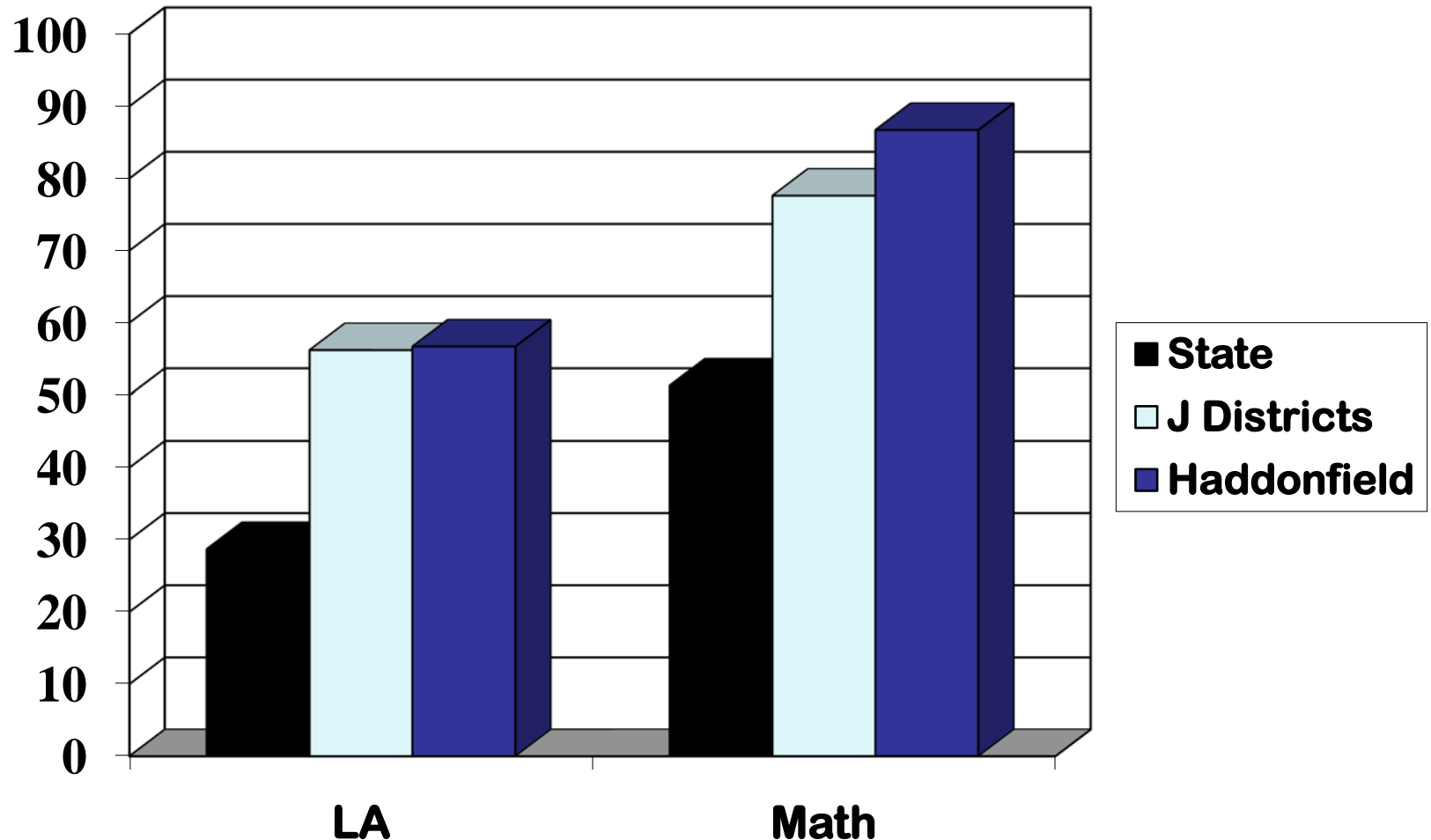
3rd Grade – NJ ASK Percent Passing Special Education Students 2010



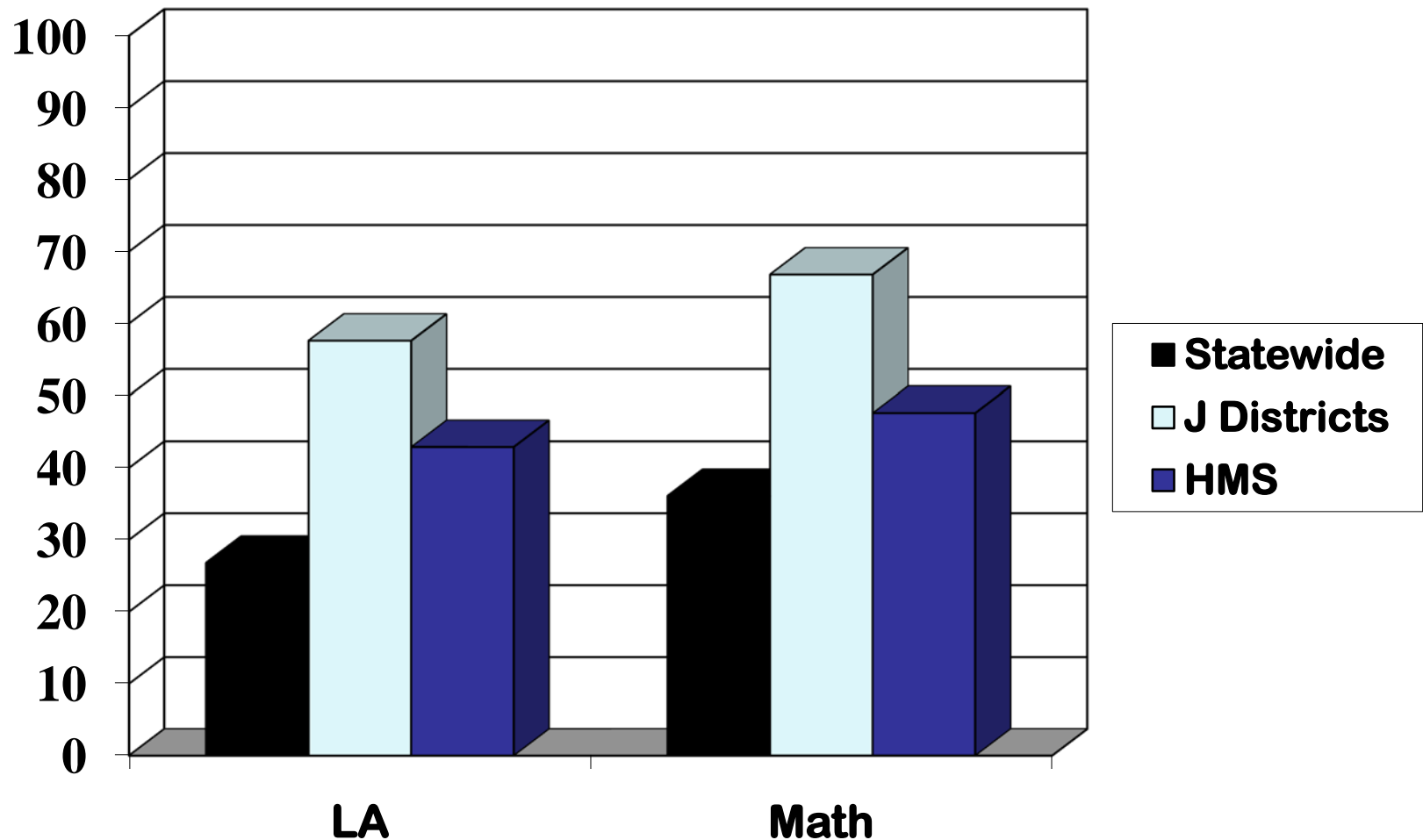
4th Grade – NJ ASK Percent Passing Special Education Students 2010



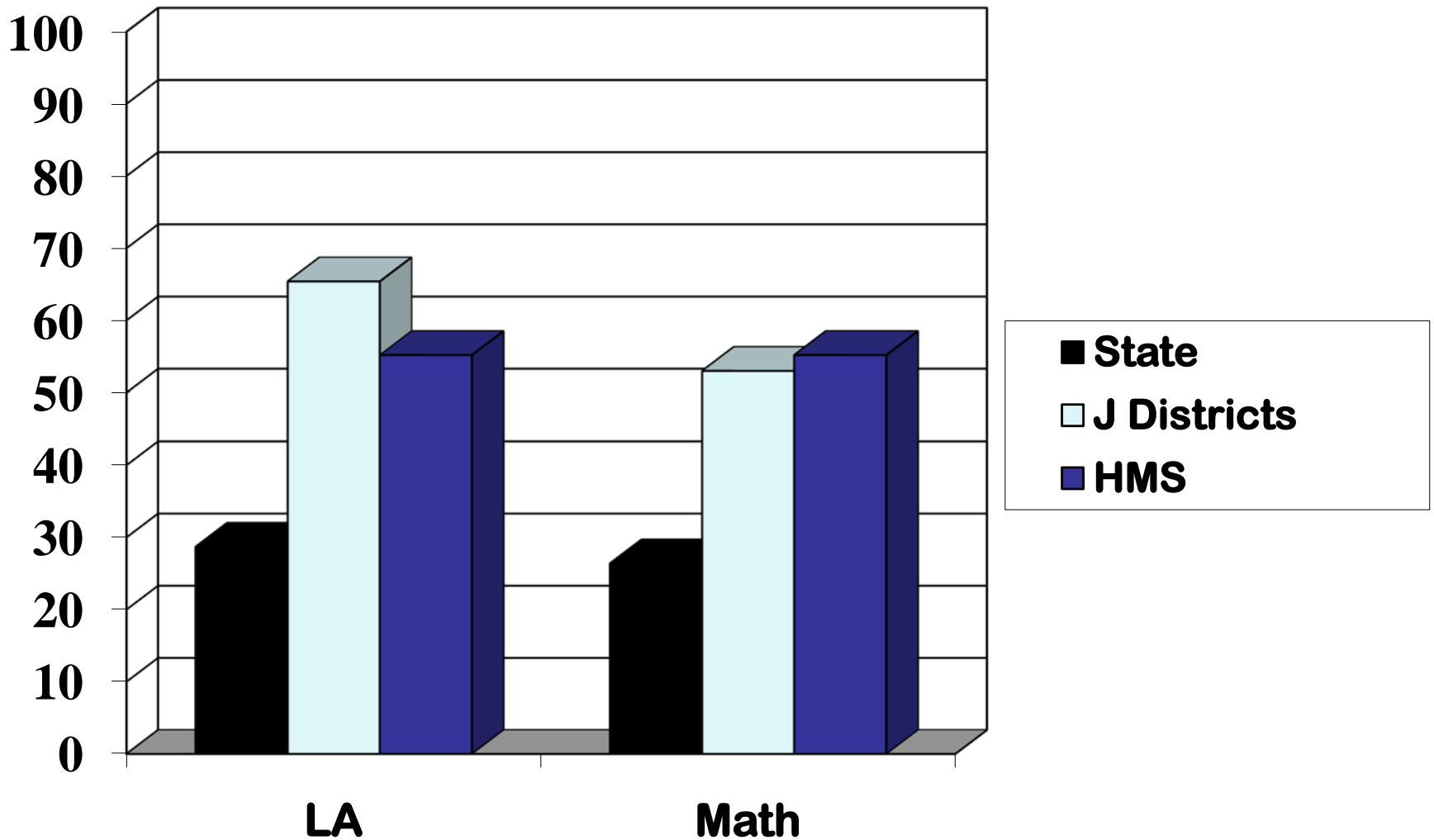
5th Grade – NJ ASK Percent Passing Special Education Students 2010



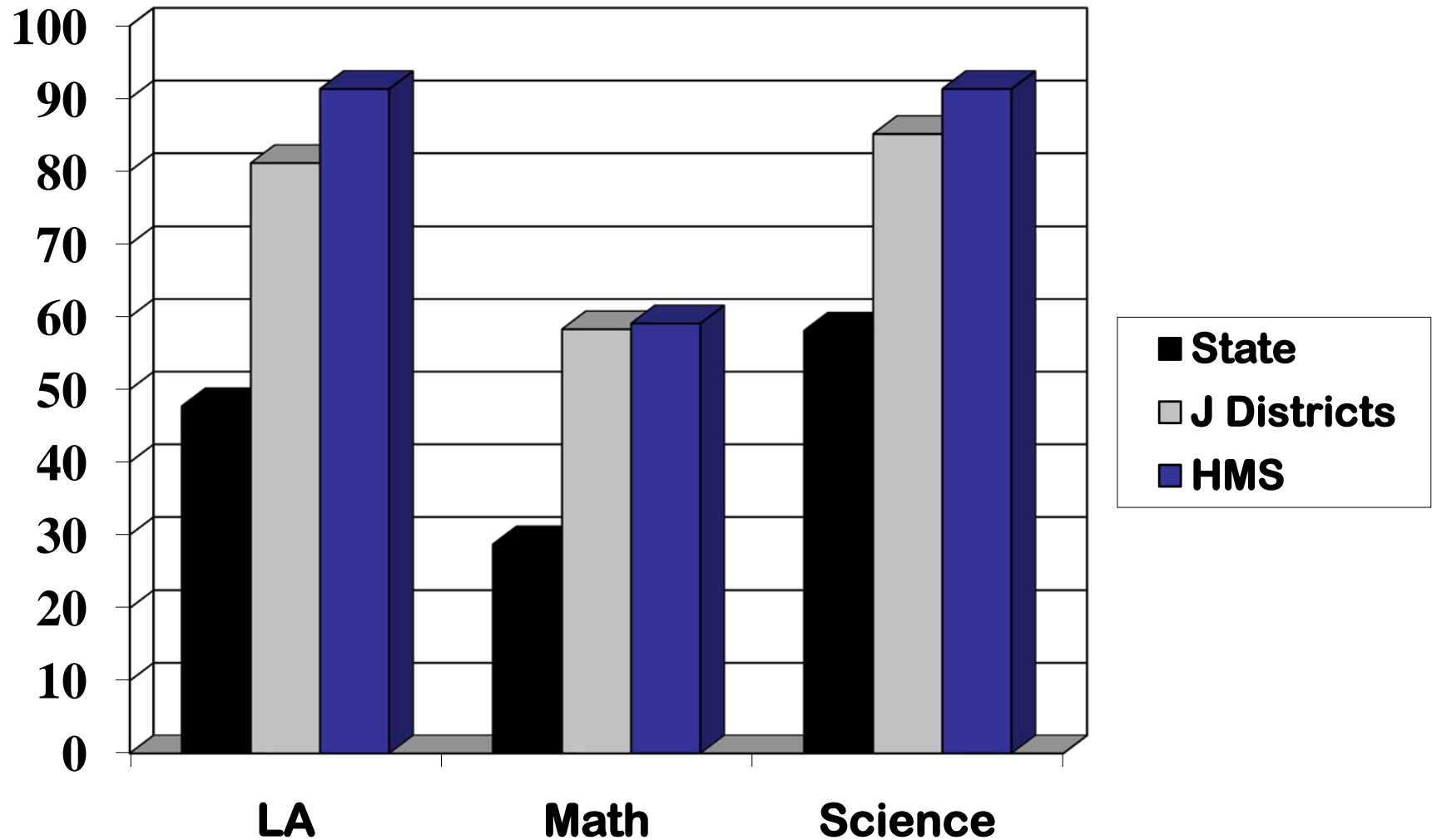
6th Grade – NJ ASK Percent Passing Special Education Students 2010



7th Grade – NJ ASK Percent Passing Special Education Students 2010



8th Grade – NJ ASK Percent Passing Special Education Students 2010



11th Grade – HSPA Percent Passing Special Education Students 2010

